



AGENDA

Agendas may be amended

JOIN TEAMS MEETING: <https://teams.microsoft.com/meet/252718732013900?p=WOexUQRtCyAMqwmQOa>

MEETING ID: 252 718 732 013 900

PASSCODE: GW2W79TK

CALL TO ORDER

ROLL CALL

1. **NOTICE OF AGENDA COMPLIANCE (PER IDAHO CODE §74-204): ACTION ITEM**
***Finding that** the regular meeting notice and agenda were posted in accordance with Idaho Code §74-204 within forty-eight (48) hours prior to the meeting at: the City of Bellevue City Hall, Post Office, and on the City's website on May 18, 2026. **Suggested Motion:** I move that the notice for the May 20, 2026, meeting was completed in accordance with Idaho Code, Section §74-204.*
2. **CALL FOR CONFLICT (AS OUTLINED IN IDAHO CODE §74-404): ACTION ITEM**
3. **COMMITTEE & LIAISON UPDATES**
4. **PUBLIC COMMENT: FOR ITEMS OF CONCERN NOT ON THE AGENDA – (COMMENTS ARE LIMITED TO 3-5 MINUTES)**
5. **OLD BUSINESS: ACTION ITEMS**
 - a. Howard Preserve Management Plan Update: Chad Stoesz, Wood River Land Trust
6. **NEW BUSINESS: ACTION ITEMS**
 - a. Planning for America 250 Tree Planting: Carter Bullock, Secretary
7. **WORK SESSIONS: ACTION ITEMS**
 - a. Past Memorial Park Recommendations: Kristin Fletcher, Chair
 - b. Bellevue Parks Tour: Kristin Fletcher, Chair
 - c. Encouraging Community Participation: Kristin Fletcher, Chair
8. **ADJOURNMENT: ACTION ITEM**



AGENDA

Las agendas pueden ser modificadas

ÚNETE A LA REUNIÓN DE EQUIPOS:

<https://teams.microsoft.com/meet/252718732013900?p=WOexUQRtCyAMqwmQOa>

ID DE LA REUNIÓN: 252 718 732 013 900

CÓDIGO DE ACCESO: GW2W79TK

LLAMADA AL ORDEN

LISTA DE LISTA

1. **AVISO DE CUMPLIMIENTO DEL ORDEN DEL DÍA (SEGÚN EL CÓDIGO DE IDAHO §74-204): PUNTO DE ACCIÓN**
*Se constató que el aviso y la agenda de la reunión ordinaria se publicaron conforme al Código de Idaho §74-204 en un plazo de cuarenta y ocho (48) horas previas a la reunión en: el Ayuntamiento de Bellevue, la Oficina de Correos y la página web de la ciudad el 18 de mayo de 2026. **Moción sugerida: Propongo que el aviso para la reunión del 20 de mayo DE 2026 se completara conforme al Código de Idaho, Secciones §74-204.)***
2. **LLAMAMIENTO AL CONFLICTO (SEGÚN LO ESTABLECIDO EN EL CÓDIGO DE IDAHO §74-404): PUNTO DE ACCIÓN**
3. **ACTUALIZACIONES DE COMITÉ Y ENLACE**
4. **COMENTARIOS públicos: PARA ASUNTOS DE INTERÉS QUE NO ESTÁN EN LA AGENDA – (LOS COMENTARIOS ESTÁN LIMITADOS A 3-5 MINUTOS)**
5. **ASUNTOS ANTIGUOS: ELEMENTOS DE ACCIÓN**
 - a. Actualización del Plan de Gestión de la Reserva Howard: Chad Stoesz, Wood River Land Trust
6. **NUEVOS NEGOCIOS: PUNTOS DE ACCIÓN**
 - a. Planificación para la plantación de árboles America 250: Carter Bullock, secretario
7. **SESIONES DE TRABAJO: PUNTOS DE ACCIÓN**
 - a. Recomendaciones pasadas de Memorial Park: Kristin Fletcher, presidenta
 - b. Visita a los parques de Bellevue: Kristin Fletcher, presidenta
 - c. Fomentando la participación comunitaria: Kristin Fletcher, presidenta
8. **APLAZAMIENTO: PUNTO DE ACCIÓN**

**En cumplimiento con la Ley de Personas con Discapacidad Estadounidense, las personas que necesiten adaptaciones especiales durante esta reunión deben notificar a la ciudad de Bellevue, 115 East Pine Street, Bellevue, Idaho 83313, o al número de teléfono 208-788-2128 ext. 4, al menos veinticuatro (24) Horas antes de la reunión.

Howard Preserve Management Plan 2026 Update

Approved on _____, 2026 by:

Christina Giordani
Mayor, City of Bellevue

Amy Trujillo
Executive Director, Wood River Land Trust

Florence Blanchard
President, Friends of the Howard Preserve

TABLE OF CONTENTS

1. Management Plan Goals, Objectives, and Responsibilities
 - 1.1. Goals
 - 1.2. Howard Preserve Conservation Values
 - 1.3. Objectives
 - 1.4. Managing Partners and General Responsibilities
 - 1.5. Identified Future Management Priorities

2. Howard Preserve History
 - 2.1. Historical Outlook
 - 2.2. Howard Preserve Acquisition

3. Natural Resources
 - 3.1. Fish and Wildlife
 - 3.2. Vegetation Resources
 - 3.3. Geology and Soils

4. Public Use
 - 4.1. Public Access
 - 4.2. Access Points for the Preserve
 - 4.3. Use Regulations
 - 4.3.1. Customary Public Use
 - 4.3.2. Organized Activities

5. Improvements
 - 5.1. Trails
 - 5.2. Bridge
 - 5.3. Signage
 - 5.4. Irrigation Canal
 - 5.5. Other Improvements
 - 5.6. Non-permitted Improvements
 - 5.7. New Improvements

6. Preserve Management
 - 6.1. Brownfield Site Management
 - 6.2. Fire Management
 - 6.3. Weed Management
 - 6.3.1. Goals
 - 6.3.2. Objectives

- 6.3.3. Previous Weed Control Efforts
- 6.3.4. Weed Control Summary
- 6.4. Preserve Management from 2004-2016

7. Exhibits

Exhibit A: Preserve Map

Exhibit B: Legal Description

Exhibit C: Irrigation and Drainage Rights of Way

Exhibit D: Plant Survey (Carol Blackburn)

Exhibit E: Weed descriptions and control methods

Exhibit F: Conservation Easement

Exhibit G: References

Management Plan Goals, Objectives, and Responsibilities

1.1. Goals:

The 37.4- acre Howard Preserve is the largest tract of open space in the City of Bellevue and exists to protect the natural floodplain ecosystem around the Big Wood River while providing reasonable public access (Exhibit A: Howard Preserve Map.) Cooperative management of the Howard Preserve, as well as the Conservation Easement on the property (Exhibit F: Conservation Easement), will ensure that the values of the native landscape are protected in perpetuity. This management plan will serve as a guiding document for managing and protecting the Howard Preserve and will be adapted as necessary in the future. The Conservation Easement is a perpetual legal document, which is not open to modification except through legal amendment.

1.2. Howard Preserve Conservation Values:

1. Native plants and wildlife
2. Healthy riparian system
3. Natural aesthetic qualities
4. Historical features
5. Educating the public about the importance of natural spaces such as the Howard Preserve.
6. Public access and enjoyment

1.3. Objectives:

1. Protect the natural floodplain ecosystem including plants and wildlife
2. Ensure that the public can safely and easily access and experience the Preserve
3. Maintain water quality in the Big Wood River
4. Protect the riparian habitat
5. Maintain tranquility and natural beauty of the preserve
6. Control noxious weeds and invasive species
7. Maintain compliance with City ordinances, including floodplain regulations
8. Respect surrounding private property
9. Prevent negative impacts on the irrigation districts' right of way
10. Comply with Idaho Department of Environmental Quality (DEQ) requirements

11. Comply with the terms of the Conservation Easement

1.4. Managing Partners & General Responsibilities:

Management activities and public activities will be reviewed by and overseen by the following cooperating groups and approved by the Bellevue City Council.

City of Bellevue (the “City”)

The City of Bellevue was founded in 1883 under a charter from the Idaho Territorial Legislature. Since then, Bellevue has grown to a population of around 3,000 citizens. The City is the last government in Idaho operating under a charter and is a full-service government, providing fire, Marshal, water, sewer, parks, planning and building services, and other services to the residents and businesses of Bellevue.

Responsibilities of the City for the Howard Preserve include:

1. Maintenance of improvements, such as the canal bridge, facilities shelter, interpretive signage, and entrance gates;
2. Providing basic services, such as collection of trash from approved receptacles and the seasonal portable toilet;
3. Trail clearing and maintenance;
4. Providing staff and equipment for management activities when practical;
5. Removing snow from designated parking area(s);
6. Enforcing posted regulations;
7. Inspecting Brownfield site annually, and reporting to DEQ if disturbance occurs.
8. Maintaining compliance with the Conservation Easement on the property.

Friends of the Howard Preserve (the “FHP” or the “Friends”)

Friends of the Howard Preserve

The Friends of the Howard Preserve is a volunteer advocacy group formed in 2005 to ensure that public access and the conservation values of the Preserve are sustained for perpetuity. The prioritized values of the group include protecting native plants and wildlife, a healthy riparian system, aesthetic qualities, historical features, educational opportunities, public access to the Big Wood River, respect for private property, City Ordinances, and the Idaho District 45 canal right-of-way.

Responsibilities of the Friends of the Howard Preserve include:

1. Advocating for the conservation values

2. Participating in ongoing maintenance as volunteers
3. Initiating projects and improvements

Wood River Land Trust (“WRLT”)

The Wood River Land Trust mission includes to “protect and restore land, water, and wildlife habitat in the Wood River Valley and its surrounding areas by working cooperatively with private landowners and local communities.” In addition to owning 20 properties in fee title, WRLT holds conservation easements on nearly 50 properties in south central Idaho. Conservation easements allow for separate ownership and management of land that is subject to conservation restrictions which benefit the public. WRLT was involved in the acquisition of the Howard Preserve, the expansion of the project, and is the holder of the conservation easement which encumbers the property.

Responsibilities of the Wood River Land Trust on the Howard Preserve include:

1. Monitoring and enforcing the Conservation Easement;
2. Management of noxious weed control efforts, in conjunction with plans adopted by the managing partners;
3. Facilitation for workdays;
4. Support for ongoing stewardship, including trail maintenance.

The managing partners will cooperate with the irrigation districts which utilize and maintain the irrigation canal that runs through the Preserve. As of the writing of this document, those districts include Wood River Valley Irrigation District 45 and Triangle Irrigation District. (Collectively the “Irrigation Districts” which are managed jointly by a Board of Control)

1.5. Identified Future Management Policies:

1. Maintain effective communication between managing partners, including annual partner meetings
2. Enforce non-handicapped parking in ADA Parking Area
3. Promote, encourage, and cooperate with restoration projects on the Preserve
4. Prevent deposition of fill material in the Preserve, and work towards remediating areas where this may have occurred in the past.
5. Contain City shop activities to present location.
6. Improve the Preserve entrances, including better seasonal closure infrastructure instead of traffic cones.
7. Pursue alternative winter snow storage locations that do not impact the Preserve.

8. Continue annual volunteer workdays on the Preserve, focusing on trail improvements, trash pickup, and weed control.
9. Coordinate with Irrigation district to prevent public interference with their infrastructure.

1.6. Identified Future Capital Projects:

Short Term:

1. Move the City Public Works Shop, and associated work, to a more appropriate location.
2. Improve and beautify the Elm Street access to the Preserve.
3. Improve all Preserve entrances with amenities such as suitable bicycle parking, rules of use, and more.
4. Move towards alternative winter snow storage locations that do not impact the Preserve.
5. Relocate or remove existing debris within the Preserve, including a large rock pile near the Oak Street dead end.
6. Place a gate, bollards, logs, or similar to restrict vehicular access to the fire turnaround within the Preserve.
7. Explore options for additional pedestrian access and parking at the southern end of the Preserve.
8. Pursue the potential acquisition of additional parcels of conservation value and/or relevance to the Preserve, including parcels RPB014100100A0, RPB0000091005A, and RPB014100100B0.
9. Explore options for expanding Preserve connectivity, including through new pathways and additional means for crossing the canal and/or river.

2. Howard Preserve History

2.1. Historical Outlook

Water resources were an important part of Idaho's—and Bellevue's— native, agricultural, and mining history. Bannock and Shoshone tribes routinely traveled between the Snake River and the Sawtooth Mountains. As evidence, a jasper knife with quartz intrusions was discovered during an archaeological survey in 2003.

Bellevue thrived in the 1880s from the success of the Minnie Moore and Queen of the Hills mines. It was chartered in 1883 by the Idaho Territorial Legislature to bring municipal law and order to the booming and sometimes unruly mining town. The area of the Howard Preserve was part of an 1890 annexation, called the Bellevue Addition, when the town was the seat of Logan

County (1890-1895). Mayor Oliver Glenn was named grantee of the property by President Benjamin Harrison through the public lands act for “the several use and benefit of the occupants of the Townsite... of Bellevue.”

Chinese immigrants arrived in Idaho and the Wood River Valley in the 1880s to work in the mines and other jobs; they had moved on from Bellevue by the late 1920s. Remnants of Chinese habitation have been unearthed in recent years in former encampment locations. Approximately 30 Chinese pioneers settled in small houses east of the pedestrian bridge that crosses the canal at the foot of Elm Street, and an 1890 Sanborn fire map references “Chinatown” and earth caves in the area.

An old city dump existed in the meadow southwest of the pedestrian bridge and was once accessed by an old canal bridge. Just north of the meadow is said to be the location of a house of ill-repute. Land adjacent to the north is the site of the original Bellevue City Park where townspeople socialized from the very earliest days.

The precursor to the current canal was identified in 1883 as the “Big Ditch” in minutes of the town’s Common Council. In 1917 the Utah and Idaho Improvement Company built the existing canal. As of today, the canal is operated by the Board of Control for the Wood River Valley Irrigation District no. 45 and the Triangle Irrigation District.

2.2. Howard Preserve Acquisition

In 1972, Lena and Ellis Howard and their son, J.B., purchased the original 12.57-acre property from Tinker and Ora Lee Disbennett. In March 2004, with the assistance of Wood River Land Trust, the City of Bellevue obtained the land from the Howard family to permanently protect this unique riverfront resource. The Howard Family, through the Howard Trust, sold this property to the City of Bellevue on February 17, 2004 at a price reduced to \$250,000 from the appraised value of \$475,000. The City of Bellevue held the title to the land while WRLT and FHP continued to actively manage the land. Funds to purchase the land and pay for improvements came primarily from a large grant from the federal Land and Water Conservation Fund (LWCF). The LWCF grant stipulated that the land “shall not be converted from public outdoor recreation use without the prior consent of the Idaho Department of Parks and Recreation, its successors and assigns, and the United States Department of the Interior, National Park Service, its successors and assigns.” Additional funds were contributed by Idaho DEQ, The Conservation Fund – Greenway Award, and the Griffin Ranch in lieu Recreation Fund from Blaine County. Citizens to Protect the Bellevue Riverfront (now Friends of the Howard Preserve), additionally raised \$40,000 at a fundraising event.

The City of Bellevue completed the following requirements per the Land and Water Conservation Fund grant:

1. Constructed an American Disabilities Act (ADA) approved bridge over and trail along the irrigation canal
2. Designed and installed signage and completed a final audit
3. Began an archeological exploration of the old dump site

In 2012, WRLT acquired two lots along Main Street and one lot near the southern end of the Preserve. The intention was to incorporate the lower 1.38-acre lot into the Preserve, and to leverage the Main Street lots for further conservation value. In 2014, WRLT and the City jointly applied to the Blaine County Land, Water & Wildlife Levy Program (LWWP) for funding assistance to purchase 0.984 acres near the northern end of the Preserve, owned by Mick Halverson. The WRLT Main Street lots were used as matching contribution for the grant request. In 2016, the application expanded to include 0.23 acres owned by Robert Gardner, which was an inholding within the eastern portion of the Preserve. The total grant request from the LWWP was for \$174,600 to complete the purchase of the lots. The conditions for approval of the grant request included the vacation of the majority of unopened streets within the Preserve as well as a portion of Elm Street, the re-zoning of the Preserve as Recreation Green Belt, and that a Conservation Easement would be established on the entire Preserve as well as the majority of the surrounding City-owned land. As part of the Preserve expansion, WRLT requested that the City also take ownership of the WRLT 1.38-acre lot, which they had acquired in 2012. The Conservation Easement, recorded on July 20th, 2017 as Instrument number 645094, protects the conservation values of the Preserve by restricting development and uses of the property that negatively impact those values. (See Exhibit F: Conservation Easement)

3. Natural Resources

3.1. Fish and Wildlife

The Big Wood River supports a complex aquatic community comprised of many species of invertebrates and fishes. Fish populations include game fish such as rainbow trout, brown trout, brook trout, cutthroat trout, and mountain whitefish as well as non-game species such as speckled dace, bridgelip sucker, and Wood River sculpin, which is listed by the State of Idaho's Comprehensive Wildlife Conservation Strategy as a "Species of Greatest Conservation Need." Wood River sculpin are endemic to the Wood River drainage, and the United States Forest Service and BLM classify the Wood River sculpin as a "Sensitive" species, while it is classified

by the Idaho Department of Fish and Game (IDFG) as a ‘Species of Concern.’³ Wildlife reported on the Preserve include mule deer, elk, moose, bobcat, black bear, cougar, long-tail weasel, fox, coyote, mink, fox squirrel, shrew, vole, mice, and many species of birds including red tail hawk, turkey vulture, neo-tropical songbirds, and Bald eagles.

3.2. Vegetation and Water Resources

The Howard Preserve is primarily within the 100-yr flood zone designated by the Federal Emergency Management Agency (FEMA.) This floodplain habitat contains valuable riparian habitat and has been identified as “Idaho Priority Wetlands”. Undeveloped land in the floodplain helps keep local water supplies clean, assists with groundwater recharge, assists with flood control and provides valuable wildlife habitat for deer, elk, birds and other species.

The riparian area features black cottonwoods, willows, red osier dogwood and other plants typical of a cottonwood gallery forest, such as Wood’s rose, serviceberry, morel, western black currant, cow parsnip, mountain alder, snowberry, Nebraska sedge, horsetail, chokecherry, and wild onion. (See Exhibit D: Plant Survey for a complete plant list.) This floodplain habitat supports numerous species of birds and mammals, including permanent and migratory residents. Forest trees (living, decaying, & dead) provide critical shelter and nesting & foraging sites for a variety of bird and mammal species, such as woodpeckers, owls, songbirds, mustelids, and bats. In addition, the Bellevue Tree Committee has begun to restore a steep, dirt embankment in the northeast corner of the preserve by planting snowberry, chokecherry, serviceberry, golden currant and other native or native-compatible shrubs.

There have been extensive efforts to control weeds on the Howard Preserve, including annual volunteer weed pulling days, release of bio-control weevils for Dalmatian toadflax and knapweed, and discussion of controlled burning. Dalmatian toadflax and knapweed continue to be dominant noxious weeds. Other weedy species include bittersweet nightshade, common burdock, tansy, rush skeleton weed, and cheat grass.

3.3. Geology and Soils

Soil types underlying the Howard Preserve are: Balaam-Adamson-Riverwash, Balaam gravely-sandy loam and Riverwash . These soil types mainly consist of unstable loose sand, gravel and cobble, as well as a small percentage of contrasting inclusions of loam. The overall function of these soils is the drainage of the surrounding floodplain into the Big Wood River basin. A portion of the soils are a former dump site which was tested by DEQ and mitigated in 2010. The mitigation included the removal of 6-12 inches of topsoil within a 2,300 square feet

area, the installation of an impermeable layer, and the import of clean topsoil. A buck and pole fence with warning signage was erected to prevent disturbance of the mitigated area.

4. Public Use

4.1. Public Access

Permissible regular public access at the Howard Preserve currently includes passive activities such as hiking, bird watching, fishing, cross country skiing, photography, and snowshoeing. Educational opportunities and other appropriate uses that do not impair the conservation values of the Preserve, as defined in the LWCF grant and Conservation Easement may also be allowed. Recreational uses not specified in the Conservation Easement or within this Management Plan will be evaluated by the managing partners, and WRLT will determine if they impair the conservation values protected by the Conservation Easement.

4.2. Access Points for the Preserve:

Vehicle access points include:

1. Martin Lane Parking Area.
 - a. Vehicles may park in the designated parking area west of the City Shop.
2. Elm Street from Downtown Bellevue.
 - a. Limited parking is available near the gate in the alley, as well as within the Elm Street dead-end.
3. Riverside Drive
 - a. Vehicles may park at the end of Riverside Drive in the public right-of-way, provided the travel lane and fire hydrant are not blocked.

Pedestrian access points include:

1. Elm Street from Downtown Bellevue;
2. A trail connecting from the Broadford Bridge to the Preserve;
3. Martin Lane Parking Area;
4. From Riverside Drive.

4.3. Use Regulations:

Permitted and non-permitted uses are defined in Exhibit F: Conservation Easement. Language found in this Management Plan is intended to build upon the protections found in that document, and to support the conservation values while remaining flexible for changing future conditions.

4.3.1. Customary Public Use

1. Motorized vehicle use is prohibited in the preserve except by ~~managing partners, for maintenance or emergency access, or ADA vehicles, the Irrigation Districts, Bellevue Marshall, Fire Department, Bellevue Streets Department, and other maintenance and emergency vehicles such as FEMA, DEQ, Idaho Department of Water Resources and~~ when authorized by managing entities. The vacated connection between Martin Lane and Elm Street may only be used by private vehicles in special circumstances, such as when Broadford Road is closed for maintenance.
2. Fireworks and fires are prohibited
3. Noise (e.g. amplified sound or music) is restricted so as not to disturb wildlife or nearby residents,
4. ~~No camping or overnight uses are allowed. Typical hours shall be dawn to dusk. Day use only. Unauthorized structures or camp sites will be removed.~~
5. Removal or pruning of vegetation other than weeds is prohibited except:
 - a. For canal or city infrastructure maintenance.
 - b. By recommendation of the managing entities and approved by the City of Bellevue.
 - c. For typical trail maintenance.
6. Hunting is not allowed within City limits, including the Preserve.
7. Public use shall not interfere with the operations of the irrigation canal. Unauthorized access to improvements such as the head gate is considered trespassing.

4.3.2. Organized Activities

1. ~~Organized events require a permit from the City of Bellevue. The Friends of the Howard Preserve and WRLT will be notified of all proposed public events requiring a permit in order that they may make recommendations or comments. As part of the permit process, the irrigation districts will also be notified.¶~~
2. ~~All Bellevue City Park regulations and fees apply.¶~~
3. ~~Motorized vehicle access is prohibited unless authorized¶~~
4. ~~Number of attendees may be restricted by City of Bellevue with recommendation of FHP and WRLT.¶~~
5. ~~The Preserve must remain open to normal public use during or in preparation for an organized event.¶~~

- ~~6. All trash, equipment and other items must be removed within 48 hours.¶~~
- ~~7. Major events (more than 50 people) are limited to two events annually to protect Preserve values. Notification and review of major events should take place 30-60 days prior to the public event with FHP making recommendations in consultation with other managing entities and Bellevue City Council having final approval.¶~~
- ~~8. Note: An annual organized event known as “The Bellevue Haunted Forest” occurred on the Howard Preserve from 2009-2015. This event accommodated 1,000 visitors over a 2-night period in October. A portion of the proceeds from the event were donated to the Friends of the Howard Preserve to assist with maintenance of the Preserve.~~

1. Commercial and private events are prohibited with the following exceptions:
 - a. The Management partners reserve the right to offer tours or educational programs that focus on the conservation values of the Howard Preserve such as stream ecology, plant identification, and geology not exceeding 20 people.
 - b. The Management partners reserve the right to hold one annual picnic and one fundraising event per year each restricted to 250 attendees with all fundraising profits going toward Howard Preserve maintenance under the following conditions:
 - c. Motorized vehicle access is prohibited.
2. The Preserve must remain open to normal public use during or in preparation for an organized event.
3. Notification and review of application for above events should take place 30-60 days prior to the public event to allow managing partners and Irrigation District to make recommendations for approval.
4. No fires may occur without a permit from Bellevue Fire Department.
5. All trash, equipment and other items must be removed within 48 hours.
6. Noise (i.e. amplified sound) is restricted.
7. Alcohol should be prohibited unless authorized by the management partners.

5. Existing Improvements:

5.1. Trails

There is a network of trails that provide access through the riparian ecosystem and to the river, and a wide section of trail that follows the canal access drive. All trail surfaces are natural, either woodchip or soil, with the exception of the ADA pathway which is compacted road mix. (See Exhibit A: Preserve map.)

5.2. Bridge

The bridge was constructed to allow for pedestrian access on lands west of the canal and to provide wheelchair/ADA access to the ADA-approved trail.

5.3. Signage:

Signage is utilized to clearly delineate preserve entrances and trails, to provide interpretive services to important features, and to recognize contributions made by various entities towards the establishment and growth of the Preserve. Current interpretive signage exists on the east side of the pedestrian bridge. Additional signage may include interpretive displays and limited regulatory signs necessary to protect preserve values and the public.

5.4. Irrigation Canal:

Near the northern end of the Howard Preserve, a headgate diverts water from the Big Wood River into a canal, which is carried south through the Preserve and beyond to provide irrigation water to many agricultural properties in the Bellevue Triangle area. The water in the canal is allocated to many water right holders downstream, and is managed by a Board of Control. As of 2026, the two irrigation districts represented by the Board of Control include Wood River Valley Irrigation District no. 45 and the Triangle Irrigation District. The canal is approximately 25 feet wide for much of its length through the Preserve, and the associated Right of Way is as wide as is reasonably necessary to maintain it, per Idaho statute. Presently, there is a two-track drive along the west side of the canal that provides access for maintenance equipment.

Under Idaho statutes, the canal managers have the right to maintain the canal and the Right of Way in order to ensure the delivery of water rights, and to protect the integrity of the Improvement. Maintenance tasks can include, but are not limited to, activities such as dredging deposited silt from within the canal, controlling noxious weeds and other undesirable vegetation along the banks, and removing trees and other vegetation from within Right of Way. These maintenance tasks are completed to maintain effective delivery of water through the system and to protect the canal from becoming structurally compromised. Accomplishing this routine and sometimes emergency maintenance often requires large equipment to utilize the Right of Way. As such, the Irrigation Districts have emphasized that the infrastructure associated with the irrigation Right of Way (the head gate and the canal) are not to be used or accessed by the public.

The managing partners of the Howard Preserve acknowledge the responsibilities that the Board of Control has to maintain the canal, as well as their rights to do so under Idaho statute. It is the intention of the managing partners to work cooperatively to allow for the effective delivery of

water through the canal, while minimizing negative impacts to the conservation values of the Preserve whenever practical. The managing partners look forward to working with the Board of Control toward the mutual benefit of all parties.

5.5. Other Improvements:

Currently, a small shed is located near the City Shop, west of Martin Lane, but on the Howard Preserve. An open-sided shelter is also located in this area to cover the portable toilet and trash can. The portion of Riverside Drive, which extends approximately 90 feet into the Preserve from the south, is paved. A 20-foot wide unpaved access drive connects from the Elm Street gate and crosses the former Halverson parcels along the eastern boundary to the private property immediately north of the Preserve.

5.6. Non-permitted Improvements:

To maintain Preserve values, permanent picnic tables, barbeques, playground equipment, labyrinths, natural structures, and memorials will not be allowed. Exceptions, such as public art and benches, are permitted only with approval of all management entities.

5.7. New Improvements:

The Conservation Easement (Exhibit F) describes permitted and non-permitted improvements and alterations to the property, as well as the Notice and Approval process to implement such changes. Any new improvements on the Preserve also require the approval of the managing partners.

A Phase I Environmental Assessment conducted on the 1.2 acres added to the Preserve in 2017 (parcels RPB0000091004A, RPB00000910030, RPB0000091002A, RPB0000091001A, and RPB00000920020) did not provide assurances against potential contamination similar to that which was remediated on the Brownfields site on the west side of the irrigation canal. In light of this, no new improvements are permitted on those parcels unless a Phase II Environmental Assessment is conducted on those parcels, which finds that no Recognized Environmental Conditions are present.

6. Preserve Management

6.1. Brownfield Site Management

A portion of the Howard Preserve was used as an unregulated landfill prior to the 1960's. As a result of this, Idaho Department of Environmental Quality (DEQ) provided a cost-free assessment of the area of the Preserve that was affected by this use. In July 2008, a Phase I Environmental Site Assessment was completed to identify potential environmental concerns. This was followed by a Phase II Environmental Site Assessment in September 2008, which identified lead contaminated surficial soils in limited areas that exceeded certain regulatory maximums.

Since the City was committed to maintaining the area as a nature preserve, eliminating the potential for residential or active recreation use exposure scenarios, a mitigation plan was crafted accordingly. DEQ recommended the removal of six inches of topsoil in the area of highest contamination levels (2,300 square feet), the placement of an impermeable barrier, and the capping of the site with clean topsoil. This mitigation work was completed in the fall of 2010, and a buck and pole fence with interpretive signage was erected to keep the public from disturbing the site. DEQ also recommended that the City place an Environmental Covenant on the site which the City did, and conduct monitoring (See Exhibit G: References: (a) Environmental Covenant and (b) Brownfields Operations and Management Plan)

Since the restoration work was completed in 2010, no disturbances of the site have been noted. Should annual monitoring identify concerns with disturbance of the site, the City will notify DEQ to determine the best course of action. As of this writing, the restoration of this site is considered complete, and the only management activities will include ongoing monitoring for disturbance.

6.2. Fire Management

Natural fire hazards exist on the Preserve due to the native vegetation in the area. This natural hazard ~~may be~~ exacerbated by human activities, including illegal campfires, the illegal use of fireworks, and fire hazards created by adjacent landowners. The priority of the managing partners is to protect the Preserve and adjacent landowners from fires originating from any source.

To prevent fires on the Preserve:

1. All City ordinances related to fires apply;
2. Fireworks and unauthorized fires are prohibited;
3. The Bellevue City Marshall will patrol preserve prior to, during, and immediately following July 4 holiday to prevent illegal use of fireworks;

4. The City of Bellevue will approve signage created for July 4th holiday notifying the public of the hazards and illegal nature of fireworks on the preserve;
5. The City will annually provide neighboring landowners with defensible space information through municipal communications, such as the City newsletter.
6. Any controlled burn to reduce fire risk or restore native plant communities must be approved by the Bellevue Fire Chief. A burn plan must be submitted to City departments for review.

6.3. Weed Management

6.3.1. Goals

The floodplain ecosystem within the Howard Preserve contains noxious and non-noxious weeds that threaten the native plant community. By definition, noxious weeds “...can directly or indirectly injure crops, other useful plants, livestock, or poultry or other interests of agriculture, including irrigation, or navigation, or the fish or wildlife resources of the United States or the public health” (Federal Noxious Weed Act, 1974; Public Law 93-629).

Annual efforts to control and decrease the influence of weeds have been and will continue among other stewardship activities. Since the establishment of the preserve, weed control efforts have combined mechanical, chemical, and biological control (biocontrol) methods. Moving forward, noxious weeds found on the Howard Preserve will be managed using bio-control and mechanical control, such as hand pulling or other acceptable mechanical methods.

Weeds not considered noxious also degrade natural ecosystems and will be controlled using similar methods. Weed control will be carried out by the Friends of the Howard Preserve, Wood River Land Trust, volunteers, and other partnering organizations, including Blaine County Bug Crew, if the opportunity arises. See Exhibit G References: ERC Pesticide Action 2015 Update and Pesticide Action Network of Blaine County Guide for use in identifying and implementing mechanical and biocontrol methods of weed control.

The Board of Control that manages the irrigation canal may also remove weeds and other vegetation within their right of way. To accomplish this, they employ various methods of control, which may include the use of herbicides. Acknowledging that this section of the canal is closely integrated with the Howard Preserve, **the managing partners will encourage the Board of Control to minimize the use of pesticides whenever practical.** ~~the use pesticides use will be minimized whenever practical.~~

6.3.2. Objectives

- A. Identify and locate noxious and non-noxious weeds on the Howard Preserve;
- B. Use a combination of ~~bio-control and mechanical~~ control methods to decrease abundance of weeds;
- C. Monitor extent of weed coverage to evaluate control effectiveness;
- D. Prevent new infestations by encouraging pedestrian use of trails and enhancing native vegetation.

6.3.3. ~~Notable Previous Weed Control Efforts~~

~~¶~~

~~2004~~

~~May: WRLT Community Weed Pull Day~~

~~Sheriff's Work Crew Weed Pull~~

~~June: Sheriff's Work Crew Weed Pull~~

~~July: Dalmatian toadflax Community Weed Pull~~

~~Oct.: Dalmatian toadflax Pull with Community School Volunteers~~

~~Re-seeding with Bluebunch Wheatgrass, Great Basin Wild Rye and Canada Bluegrass by Community School Volunteers~~

~~Dalmatian toadflax SkillUSA Volunteer Pull~~

~~WRLT establishes photopoints for annual monitoring~~

~~Nov: Discussion with Mike Aoi at BLM regarding controlled burn of weedy open meadow~~

~~¶~~

~~2005~~

~~June: WRLT Community Weed Pull Day~~

~~Toadflax and knapweed bio-control weevils released~~

~~Biocontrol monitoring training session conducted by University of Idaho~~

~~WRLT establishes transects for monitoring of bio-control weevils~~

~~Aug.: Mechanical removal of tansy ragwort and common burdock by BLM~~

~~Oct: Dalmatian toadflax pull with SkillUSA volunteers.~~

~~¶~~

~~2006~~

~~June: WRLT and Friends of Howard Preserve Work Day~~

~~WRLT annual photopoint and bio-control monitoring~~

~~_____~~

~~2007~~

~~June: WRLT and Friends of Howard Preserve Work Day~~

~~WRLT annual photopoint and bio-control monitoring~~

~~2008~~

~~June: WRLT and Friends of Howard Preserve Work Day~~

~~July: WRLT annual photopoint monitoring~~
~~2009~~
~~June: WRLT and Friends of Howard Preserve Work Day~~
~~2010~~
~~June: WRLT and Friends of Howard Preserve Work Day~~
~~2011~~
~~June: WRLT and Friends of Howard Preserve Work Day~~
~~2012~~
~~May: Blaine County Cooperative Weed Management Area (CWMA) spraying for noxious weeds~~
~~June: WRLT and Friends of Howard Preserve Work Day~~
~~2013~~
~~May: Blaine County CWMA spraying for noxious weeds~~
~~June: WRLT and Friends of Howard Preserve Work Day~~
~~2014~~
~~May: Blaine County CWMA spraying for noxious weeds~~
~~June: WRLT and Friends of Howard Preserve Work Day~~
~~2015~~
~~May: Project Wow release of bio-control with elementary students~~
~~June: WRLT and Friends of Howard Preserve Work Day~~
~~2016~~
~~May: Project Wow release of bio-control with elementary students~~
~~June: WRLT and Friends of Howard Preserve Work Day~~

6.3.34. Weed control summary:

There are a number of species of weeds that have been identified on various parts of the Howard Preserve. The managing partners have implemented several methods of control ~~inover~~ the past ~~12 years~~, with good success. Biocontrol releases have been carried out to combat Dalmatian toadflax and Spotted knapweed. Bio-control for Diffuse knapweed, Canada Thistle and Tansy Ragwort should be researched to ensure these methods are used if weed populations grow unwieldy for mechanical control. Multiple partnerships in planning, executing and monitoring

bio-control will be explored. Infestations of Dalmatian toadflax have decreased significantly since control efforts began in 2005. Additionally, annual mechanical control has been implemented during workdays in areas where biocontrol agents were not applied or observed. Biocontrol releases were carried out again during 2014-2016, and were used as educational opportunities with local elementary students.

Spotted and diffuse knapweed, common burdock, and common mullein continue to be pulled during workdays. Infestations of Canada thistle have been minimal. Mechanical removal has proven effective, as it has been consistently applied on an annual basis. Herbicide applications have been minimal, and were conducted by WRLT in conjunction with the Blaine County Weed Control Department from 2012-2014.

~~6.4. Preserve Management from 2003-202616~~



~~2003~~

- ~~● Archaeological survey completed by Claudia Walsworth~~



~~2004~~

- ~~● Consolidation of downed cottonwood trees with SkillUSA volunteers~~
- ~~● Community workday hosted by WRLT & FHP~~



~~2005~~

- ~~● Southern entrance gate installed~~
- ~~● Pedestrian trails and bridge construction began~~
- ~~● Plant survey completed by Carol Blackburn~~
- ~~● Community workday hosted by WRLT & FHP~~
- ~~● First annual Howard Community Picnic (attendance: 15)~~



~~2006~~

- ~~● Interpretive signage installed at pedestrian bridge~~
- ~~● Community workday hosted by WRLT & FHP~~
- ~~● Second annual Howard Community Picnic (attendance: 85)~~



~~2007~~

- ~~● Community workday hosted by WRLT & FHP~~
- ~~● Third annual Howard Community Picnic (attendance: 150)~~



~~2008~~

- ~~WRLT and Bellevue Library host aquatic invertebrates education days.~~
- ~~Community workday hosted by WRLT & FHP.~~
- ~~Fourth annual Howard Community Picnic (attendance: 200).~~

¶

2009

- ~~Community workday hosted by WRLT & FHP.~~
- ~~FHP funded a traffic gate including a pedestrian entry and a 12' controlled vehicle entry, which complies with all applicable districts and jurisdictions having authorized vehicle access, was installed near the top of Elm Street, west of the private lane accessing block 91.~~

¶

2010

- ~~Community workday hosted by WRLT & FHP.~~
- ~~To address the Irrigation District and neighbors' concerns about safety and public nuisance factors in the head gate area, FHP, with City approval, hired a local contractor to create a designated public parking area (100' or 15 cars) near the City shop as shown on the map. Gravel was used as a base. The former road from the City's red storage shed leading to the head gate was converted into a pedestrian path. The Irrigation Districts' and emergency access to the head gate has been maintained on all official canal easements. (See Exhibit A: Preserve Map).~~
- ~~Interpretive signs were installed at intersections between the irrigation canal and private property.~~
- ~~Native trees and shrubs provided by volunteers and FHP were planted on the embankment below the alley on the north side of Elm Street, intended to continue the stabilization project installed the previous fall on the north side. Due to drought conditions and inconsistent functioning of the drip irrigation system, only 10% of the plants survived.~~

¶

2011

- ~~Community workday hosted by WRLT & FHP.~~
- ~~The FHP funded a trash receptacle for the parking area.~~
- ~~To address safety and nuisance problems near the North entrance of the preserve, the South loop road outside of the preserve, beginning at the public parking area west of Martin Lane, extending southwest to the irrigation canal head gates was converted to pedestrian access only, excluding all applicable districts and jurisdictions having authorized vehicle access. FHP installed a post and pole fence along the Halverson property and parking is prohibited between the designated parking area and the south turnaround.~~

¶

2012

- ~~Community workday hosted by WRLT & FHP~~
- ~~FHP funded and completed a cobblestone swale to direct runoff from the Elm Street gate, which was eroding the entry trail.~~
- ~~City installs handicap accessible portable toilet.~~

~~¶~~

~~2013~~

- ~~Community workday hosted by WRLT & FHP~~
- ~~Approximately 250' of the existing riverside trail near the south end of the preserve was eroded between the years 2005-2009. During a volunteer workday, the trail was relocated away from the eroding river bank, approximately 150' to the east.~~
- ~~Covered Elm Street access drive with wood chips~~

~~¶~~

~~2014~~

- ~~Community workday hosted by WRLT & FHP~~
- ~~FHP funded and installed three benches carved from local cottonwood trees~~

~~¶~~

~~2015~~

- ~~Community workday hosted by WRLT & FHP~~
- ~~With funds from City of Bellevue and FOHP, a facility shed was built south of the parking area to protect the portable toilet, trash receptacle, and dog bag dispensers.~~

~~¶~~

~~2016~~

- ~~The FHP funded a trash receptacle near the pedestrian bridge.~~

~~¶~~

Bellevue Memorial Park

Survey and Park Committee
Recommendations

–

What kind of improvements should be made to Memorial Park?

—

Since it's their park, we asked the residents. In English and Spanish.

Help Improve Bellevue's Memorial Park!

The Bellevue Parks Committee would like to learn more about how our community uses Memorial Park. We want to improve management of the park and enhance recreation opportunities. Please help us by taking a moment to fill out this survey. Your answers will be anonymous, and your participation is voluntary. If you have any questions about the survey, please feel free to contact Ashley Dyer, City of Bellevue planning associate, at 208-788-2128, ext. 8.

- Do you live in:
Bellevue _____
Hailey _____
Other _____
- How old are you? <19 _____ 20-30 _____ 31-40 _____ 41-50 _____ 51-60 _____ 61-70 _____ 71+ _____
- Overall, how satisfied were you with visiting the park? (circle one)
Not at all Satisfied Slightly Satisfied Moderately Satisfied Very Satisfied Extremely Satisfied
- Approximately how many times have you visited Memorial park over the past 12 months? _____
- What activity(s) do you like to do at the park? (check all that apply)
Picnic/shelter _____ Visiting with friends _____ Dog Walking _____
Children's playground _____ Little free library _____ Reading/relaxing _____
Basketball _____ Frisbee/volleyball _____ Bloom Truck _____
Other _____
- How do you think the City of Bellevue should manage the following areas? (circle one response in each category).
Playground > Less equipment Leave it as is More equipment
Basketball Courts> Fewer courts Leave it as is More courts
Picnic Pavilion> Smaller Leave it as is Larger or additional
Stage> Remove Leave it as is More developed/roof
Open trees/ lawn> Fewer trees & lawn Leave it as is More trees & lawn
- What other things would you like to see in the park?
Sculpture/art work _____ Skate park _____
BBQ facilities _____ Other ideas _____
Pathways _____
- THANK YOU!** Do you have any other comments or suggestions about Memorial Park? _____

[We're planning a park clean up October 24th from 10 AM-Noon!](#)

Watch for fliers and social media, please join us.

Bellevue launches Memorial Park survey

Comprehensive plan identifies park for a town square site

Tony Evans Oct 7, 2020  0

Surveys were available on the City website. Public notifications were made using the Idaho Mountain Express (October 7, 2020) and City Water Bill.

The Parks Committee also made them available at City Hall, Chapalita's Market (Hispanic Heritage Month celebration) and the Memorial Park clean up.

67 people filled out the survey!


Survey Results

Survey results can be found on the City website/Parks Committee.

Surveys done using Survey Monkey were compiled into a report.

Original hard copy surveys were scanned into one pdf document.

Bellevue Parks Committee's Memorial Park Recommendations

Priority 1-5 (1=low, 5=high)	Time/Money Investment: \$\$\$ (>\$5k), \$\$ (\$1k-\$5k), \$ (<\$1k)	Recommendation	Estimated Cost	Potential Partners	Funding Source	Maintenance Responsibility and long term funding
General Maintenance						
5	\$\$	Develop multi-year budget and commit to maintenance		NA	City	City
5	\$	Winter: Plow sidewalks and parking on each side of the park. Notify residents who are plowing snow into the park and parking areas (City ROW) that it is not allowed and snow must be stored on their property.		NA	City	City
Access						
5	\$	Hwy 75 directional signs to park 		City	City or BURA	City
3	\$	Cross walks and bike lane from the bike path to park (Elm Street) This could be done with a sidewalk or just stripe the street with paint.	Paint and staff time	City	NA	City

Orientation



Bellevue Parks Committee's Memorial Park Recommendations

Priority 1-5 (1=low, 5=high)	Time/Money Investment: \$\$\$ (>\$5k), \$\$ (\$1k-\$5k), \$ (<\$1k)	Recommendation	Estimated Cost	Potential Partners	Funding Source	Maintenance Responsibility and long term funding
Picnic Shelter Area						
5	\$	Re-envision picnic shelter area (Suggestions below)		High School, Bellevue Arts Council		
4	\$	Paint/mural storage building, restroom shelter and picnic shelter		High school and/or Bellevue Arts Council	BURA or donation(s)	City
4	\$\$	Hardscape the North and East area between the picnic shelter sidewalk and restroom shelter/storage building (pavers, stamped/colored concrete). This area could then be used to place a BBQ that can be brought in.		Landscaping companies and contracting businesses	BURA or donation(s)	City
3	\$\$	3 panel Kiosk (information, reservation info and orientation)		High school and/or Bellevue Arts Council		
2	\$ or \$\$	Raised bed with shrubs garden between picnic shelter and BB courts. Will also need drip irrigation. Shrubs will be drought tolerant and pollinator friendly.		Landscaping companies	BURA or donation(s)	City

Bellevue Parks Committee's Memorial Park Recommendations

Priority 1-5 (1=low, 5=high)	Time/Money Investment: \$\$\$ (>\$5k), \$\$ (\$1k-\$5k), \$ (<\$1k)	Recommendation	Estimated Cost	Potential Partners	Funding Source	Maintenance Responsibility and long term funding
Courts						
5	\$	Stripe/transition one of the BB courts into 4 pickleball courts. When the court is not being used for pickleball it could still be used for BB.	\$1k	Pickleball club. Would need to stripe/tape the courts.	BURA and/or pickleball club	City or club
5	\$	Replace BB nets	\$10/each		City	City
3	\$ or \$\$	Refurbish or replace BB court fences with plastic coating fences and use dark colors instead of galvanized.			BURA or donation(s)	
3	\$ or \$\$	Install artwork on fences. Need to refurbish/replace fence before this is done.		High school and/or Bellevue Arts Council	BURA, grants or donation(s)	
1	\$\$	Backboard for single tennis practice, artwork could be placed or painted on the backside. Need to refurbish/replace fence before this is done.	\$1.5 - \$2k		Grants or Donation(s)	City

Bellevue Parks Committee's Memorial Park Recommendations

Priority 1-5 (1=low, 5=high)	Time/Money Investment: \$\$\$ (>\$5k), \$\$ (\$1k-\$5k), \$ (<\$1k)	Recommendation	Estimated Cost	Potential Partners	Funding Source	Maintenance Responsibility and long term funding
Playground Area						
5	\$ or \$\$	Refresh wood chips (till and supplement)			grants, BURA, donations	City
4	\$\$\$	Reorganize playground equipment and construct a skate park	Skate Park: \$225k (5,000 sq. ft @ \$45/sq ft) Reorganize playground equipment.		grants, BURA, donations	City
3	\$\$\$	Purchase playground equipment as needed add rock climbing boulder or other natural features.			BURA, High School	

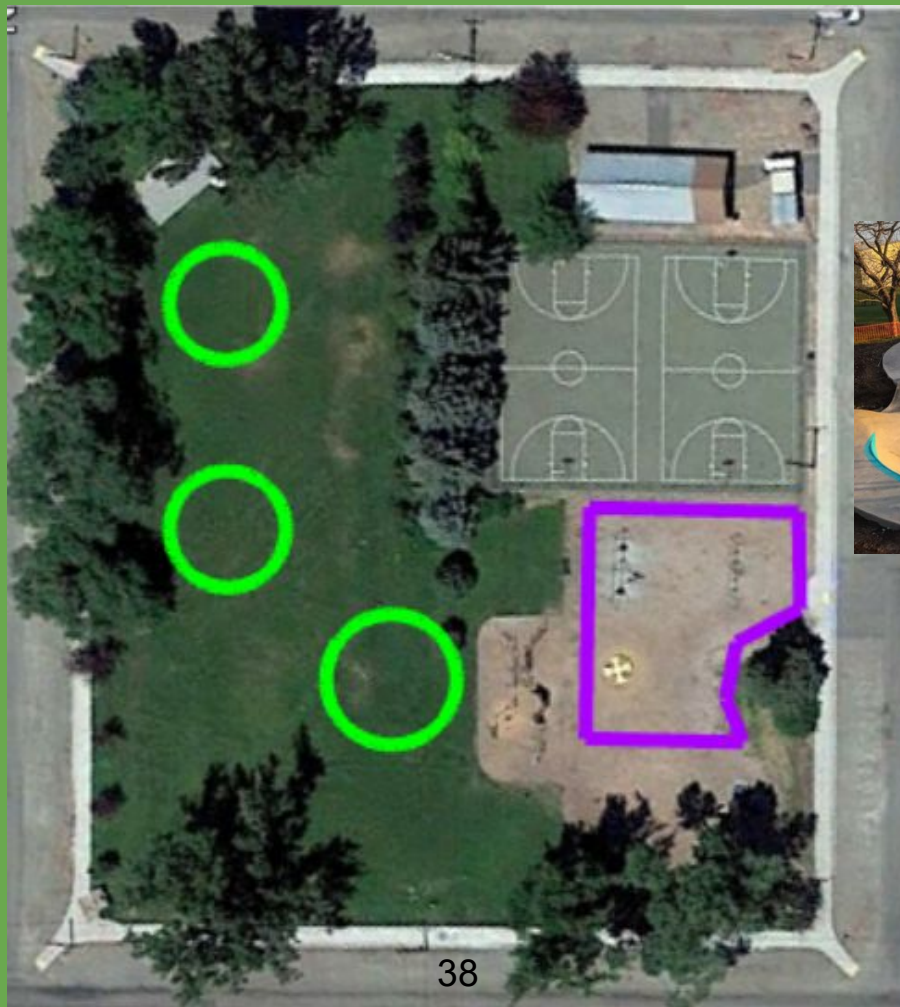
Bellevue Parks Committee's Memorial Park Recommendations

Priority 1-5 (1=low, 5=high)	Time/Money Investment: \$\$\$ (>\$5k), \$\$ (\$1k-\$5k), \$ (<\$1k)	Recommendation	Estimated Cost	Potential Partners	Funding Source	Maintenance Responsibility and long term funding
Stage						
4/5	\$\$\$	Replace existing stage with a multi-purpose stage/pavillion		High School	BURA, grants, donations	City
Grass Area						
5	\$ or \$\$\$	Remove and/or relocate weeping crabapple trees			City	
5	\$\$	Plant new shade trees		Landscaping Companies	BURA, donation(s), City	City
5	\$	Remove BBQ grills and fill holes with dirt and seed with grass		City	City	City
5	\$	Provide dog poop bag dispensers and trash cans			BURA	City
4	\$\$	Benches, need to strategically locate	\$300/bench		BURA, donation(s), City	City
4	\$	Plant shrubs for pollinators and drought tolerance			BURA, Idaho Native Plant Society grant, other grants, donation(s)	City

Stage/Multi-Purpose Pavilion Ideas



Shade Trees



38



Skate Park

Next Steps

1. City Council discussion and approval
2. Implementation Priorities
3. Identify and pursue funding

1" = 30'

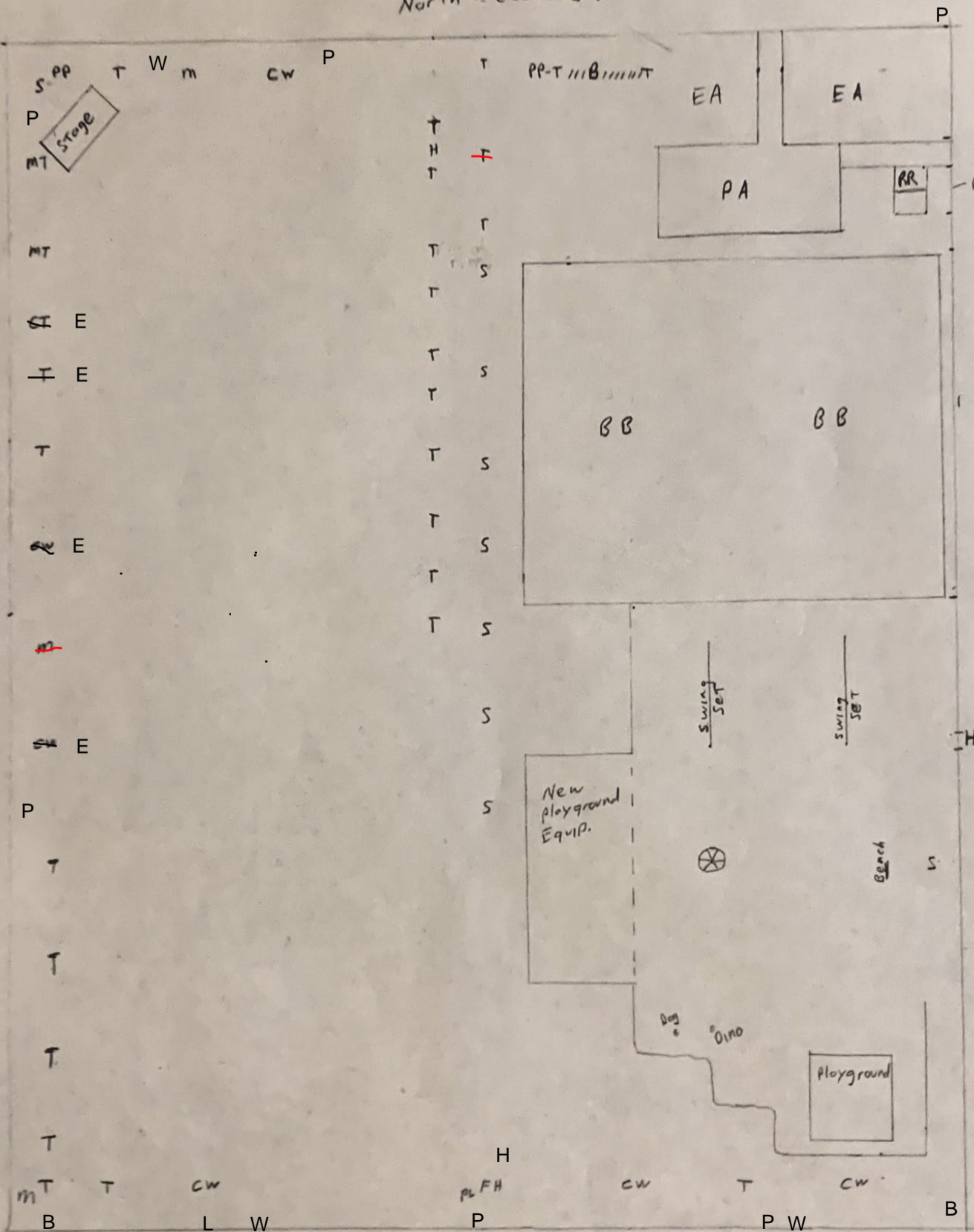
- BR = bike rack
- E = elm
- L = little library
- P = Poop station
- W = Waste basket

- CW = cotton wood
- m = maple
- T = Tree
- PP/PL = powerline
- B = Bush
- FH = Fire hydrant
- M = memorial
- S = Spruce Tree
- HR = Handicap Ramp
- BB = Basket Ball
- PA = picnic Area
- RR = Rest room
- EA = empty Area
- H = Hydrant

North - cedar ST.

WEST
3rd ST.

EAST
4th ST



Porta potty

40
SOUTH - ELM ST.