



CITY OF BELLEVUE, IDAHO

Common Council

Monday, July 22, 2024 | 5:30 PM

115 E. Pine Street, Bellevue, Idaho 83313

AGENDA

This agenda is subject to revisions. All revisions will be underlined.

JOIN ZOOM MEETING

<https://us02web.zoom.us/j/85954503307?pwd=0XNHk1ebUPzvYC5DtF7NGxu09QVQtl.1>

Meeting ID: # 859 5450 3307

Passcode: # 634239

One Tap Mobile

+1-253-215-8782 US (Tacoma)

+1-346-248-7799 US (Houston)

Please Mute Your Call

Friendly Reminder: Please turn off all cell phones except for emergency personnel.

Finding That the regular meeting notice and agenda were posted in accordance with Idaho Code §74-204 within forty-eight (48) hours prior to the meeting at: Bellevue City Hall, Post Office, and the City's website on July 18, 2024.

CALL TO ORDER: Mayor Chris Johnson

ROLL CALL:

1. **NOTICE OF AGENDA COMPLIANCE:** (AS OUTLINED IN IDAHO CODE §74-204) | ACTION ITEM
(Suggested Motion: I move that the notice for the July 22, 2024, regular meeting was completed in accordance with Idaho Code, Section §74-204.)
2. **CALL FOR CONFLICT:** (AS OUTLINED IN IDAHO CODE §74-404)
3. **WASTEWATER FACILITY PLAN UPDATE, DATED JUNE 30, 2023 (PLANNING STUDY AND ENVIRONMENTAL DOCUMENT):**
 - a. **PUBLIC COMMENT PERIOD.** *(Written Comments may be submitted during the meeting as well)*
 - b. Consideration of Discussion and the Council's Possible Formal Preferred Selected Alternative (Alternatives found in the City of Bellevue, Wastewater Facility Plan Update, Section 4: Collection System Alternatives) | ACTION ITEM
4. **PUBLIC COMMENT:** (FOR ITEMS OF CONCERN NOT ON THE AGENDA)
5. **PARK FEES:** (Request for Fee Waiver and/or Reduction of Fee – Memorial Park)
Consideration of Fee Waiver and/or Reduction of Fees for Memorial Park of \$680 for September 1 and September 2, 2024, for the Bellevue Labor Day Celebration: Stefany Mahoney: | ACTION ITEM
6. **CONSENT AGENDA:** ACTION ITEM
 - a. Approval of Common Council Meeting Minutes
 - i. May 13, 2024, Regular Council Meeting Minutes
 - b. Approval of Claims: July 09, 2024, through July 22, 2024
 - c. Department Head Reports
7. **NEW BUSINESS:**
 - a. Consideration of Discussion and Possible Recommendation for the City to Proceed with Advertising / Requesting Invitation to Bids for Professional Appraisal Services; Including but not Limited to Setting Parameters on Financial Cost for 61.01 Acres of City Owned Property, Blaine County Parcel Number RPB041700000B0 (North of Cowcatcher Loop and East of Slaughterhouse Road): Chris Johnson, Mayor | ACTION ITEM
 - b. Consideration of Resolution No. 2384, A Resolution of the City of Bellevue, Idaho, Relating to Surplus Personal Property; Declaring Certain Personal Property of The City to be Surplus; Authorizing and Directing the Disposal of the Surplus Property; and Providing an Effective Date
8. **BUDGET WORKSHOP:**
Consideration of Discussion and any Formal Direction Regarding the Preliminary Budget for Fiscal Year 2025: Shelly Shoemaker, City Treasurer | ACTION ITEM

9. ADJOURNMENT: ACTION ITEM

/s/ Michelle K. Snarr
City Clerk

I, designated City Clerk for the City of Bellevue, Idaho, hereby certify that the regular meeting notice and agenda were posted in accordance with *Idaho Code §74-204* within forty-eight (48) hours prior to the meeting at: the City of Bellevue City Hall, Post Office, and the City's Website on ***July 18, 2024***. Council Packets are available online at <https://www.bellevueidaho.us/> (Located under Mayor and City Council /City Council Agendas and Minutes)

In compliance with the American with Disabilities Act, individuals needing special accommodations during this meeting should notify the City Bellevue, 115 East Pine Street, Bellevue, Idaho 83313, or ***phone number 208-788-2128 ext. 4, at least twenty-four (24) hours prior to the meeting.***



CIUDAD DE BELLEVUE, IDAHO

Consejo Común

Lunes, 22 de julio de 2024 | 17:30
115 E. Calle Pino, Bellevue, Idaho 83313

AGENDA

Esta agenda está sujeta a revisiones. Todas las revisiones estarán subrayadas.

ÚNASE A LA REUNIÓN DE ZOOM

<https://us02web.zoom.us/j/85954503307?pwd=0XNHk1ebUPzvYC5DtF7NGxu09QVQtI.1>

ID de reunión: # 859 5450 3307

Código de acceso: 634239

Móvil con un toque

+1-253-215-8782 EE. UU. (Tacoma)

+1-346-248-7799 EE. UU. (Houston)

Silencie su llamada

Recordatorio amistoso: apague todos los teléfonos celulares excepto los del personal de emergencia.

Determinar que el aviso y la agenda de la reunión regular se publicaron de conformidad con el Código de Idaho §74-204 dentro de las cuarenta y ocho (48) horas anteriores a la reunión en: Bellevue City Hall, la oficina de correos y el sitio web de la ciudad el de 18 julio de 2024.

LLAMADA AL ORDEN: Alcalde Chris Johnson

LLAMADA DE ROL:

1. **AVISO DE CUMPLIMIENTO DE LA AGENDA:** SEGÚN EL CÓDIGO DE IDAHO §74-204 | **ARTÍCULO DE ACCIÓN**
(Moción sugerida: propongo que el aviso para la reunión ordinaria del 22 de julio de 2024 se complete de acuerdo con el Código de Idaho, Sección §74-204).
2. **LLAMADO A CONFLICTO:** (COMO SE DESCRIBE EN EL CÓDIGO DE IDAHO §74-404)
3. **ESTUDIO DE PLANIFICACIÓN DE INSTALACIONES DE AGUAS RESIDUALES Y DOCUMENTO AMBIENTAL:**
 - a. PERIODO DE COMENTARIOS PÚBLICOS. (También se pueden enviar comentarios escritos durante la reunión)
 - b. Consideración de la alternativa seleccionada preferida por el Consejo (alternativas que se encuentran en la Ciudad de Bellevue, Actualización del Plan de Instalaciones de Aguas Residuales, Sección 4: Alternativas al sistema de recolección) **ARTÍCULO DE ACCIÓN**
4. **COMENTARIO PÚBLICO:** (PARA TEMAS DE PREOCUPACIÓN QUE NO ESTÁN EN LA AGENDA)
5. **TARIFAS DEL PARQUE:** (Solicitud de exención de tarifa y/o reducción de tarifa – Memorial Park)
Consideración de exención de tarifas y/o reducción de tarifas para Memorial Park de \$680 para el 1 y 2 de septiembre de 2024, para la celebración del Día del Trabajo de Bellevue: Stefany Mahoney
6. **AGENDA DE CONSENTIMIENTO:** **ARTÍCULO DE ACCIÓN**
 - a. Aprobación del Acta de la Reunión del Consejo Común
 - i. 8 de mayo de 2024, Acta de la reunión ordinaria del Consejo
 - b. Aprobación de Reclamaciones: 9 de julio de 2024 al 22 de julio de 2024
 - c. Informes del jefe de departamento
7. **NUEVO NEGOCIO:**
 - a. Consideración de discusión y posible recomendación para que la Ciudad proceda con la publicidad/solicitud de licitación para servicios de tasación profesional; Incluyendo, entre otros, el establecimiento de parámetros sobre el costo financiero de 61,01 acres de propiedad de la ciudad, número de parcela del condado de Blaine RPB041700000B0 (al norte de Cowcatcher Loop y al este de Slaughterhouse Road): Chris Johnson, alcalde | **ARTÍCULO DE ACCIÓN**
 - b. Consideración de la Resolución No. 2384, Resolución de la Ciudad de Bellevue, Idaho, relativa a bienes muebles excedentes; Declarar Excedentes Ciertos Bienes Muebles de la Ciudad; Autorizar y Dirigir la Enajenación de los Bienes Excedentes; y proporcionar una fecha de entrada en vigor: Kurt Gaston, Marshal | **ARTÍCULO DE ACCIÓN**

8. **TALLER DE PRESUPUESTO:**

Consideración de la discusión y cualquier dirección formal sobre el presupuesto preliminar para el año fiscal 2025, Shelly Shoemaker, Tesorera de la Ciudad | **ARTÍCULO DE ACCIÓN**

9. **APLAZAMIENTO: ARTÍCULO DE ACCIÓN**

/s/ Michelle K. Snarr
Secretario Municipal, Ciudad de Bellevue

*Yo, Secretario Municipal designado para la Ciudad de Bellevue, Idaho, por la presente certifico que el aviso de la reunión regular y la agenda se publicaron de acuerdo con el Código de Idaho §74-204 dentro de las cuarenta y ocho (48) horas anteriores a la reunión en: la Ciudad de Bellevue Ayuntamiento, oficina de correos y sitio web de la ciudad el **18 de julio de 2024**. Los paquetes del consejo están disponibles en línea en <https://www.bellevueidaho.us/> (ubicados en Alcalde y consejo municipal/Agendas y actas del consejo municipal)*

De conformidad con la Ley de Estadounidenses con Discapacidades, las personas que necesiten adaptaciones especiales durante esta reunión deben notificar a City Bellevue, 115 East Pine Street, Bellevue, Idaho 83313, o al número de teléfono 208-788-2128 ext. 4, al menos veinticuatro (24) horas antes de la reunión.



City of Bellevue

City of Bellevue
Regular Common Council Meeting
July 22, 2024

**Agenda Item 3: WASTEWATER FACILITY PLAN UPDATE, DATED JUNE 30, 2023
(PLANNING STUDY AND ENVIRONMENTAL DOCUMENT)**

ITEM 3a: PUBLIC COMMENT PERIOD

ITEM 3b: Consideration of Discussion and the Council's Possible Formal Preferred Selected Alternative (Alternatives found in the City of Bellevue, Wastewater Facility Plan Update, Section 4: Collection System Alternatives) | **ACTION ITEM**

Action Item: Chris Johnson, Mayor

Note: Keller Associations is the engineering firm that provided the City of Bellevue Wastewater Plant Facility Plan Update, dated June 30, 2023.

Suggested Motion: A possible motion to select the Council's preferred Alternative (Alternatives as outlined in the June 30, 2023, City of Bellevue, Wastewater Facility Plan Update, Section 4: Collection System Alternatives)

Link: [**Wastewater Plant Facility Plan Update \(June 30, 2023\)**](#)

Attachment(s): City of Bellevue, Idaho, *Wastewater Plant Facility Plan Update Alternatives* (found in the City of Bellevue, Wastewater Facility Plan Update, **Section 4: Collection System Alternatives**) **SECTION 4 IS THE ONLY PORTION OF THE PLAN THAT IS ATTACHED TO THE PACKET**

Notice of Public Comment Period – published in the Idaho Mountain Express on July 3, 2024, and July 10, 2024; Posted on the City's Website, City Hall, and the Bellevue Post office on July 3, 2024

Public Comment Form: (available in the July 22, 2024, Council Packet (posted on the City's website), at City Hall and will be provided at the Council meeting.



CHAPTER 4 - COLLECTION SYSTEM ALTERNATIVES

This chapter presents alternatives to correct collection system deficiencies identified in Chapter 2 and summarized in Chapter 3. Treatment system alternatives are discussed in Chapter 5. General capacity and condition upgrades are discussed in Chapter 2. An alternative cost/benefit analysis is also performed, which the recommended alternatives are included in the Capital Improvement Plan (CIP) in Chapter 6.

There are several different alternatives to meet the collection system deficiencies which a high-level screening of alternatives was conducted with City staff. Factors such as capital cost, O&M, footprint, and expandability were considered. This section describes the alternatives considered to meet the collection system deficiencies. The alternatives were evaluated based on the following goals:

- Solutions that are practical and cost effective.
- Utilize equipment and materials that are readily available.
- Minimize incurring additional debt and user rate increases.

Options for addressing certain deficiencies of the existing wastewater treatment are discussed in the following paragraphs. If a collection system deficiency had one clear preferred solution (such as installing signs, replacing the SCADA, etc.), then the solution is discussed in Chapter 6 and largely relates to pump stations.

The advantages, disadvantages, and comparative costs of alternatives are presented in this chapter. They include estimated construction costs with markups of 10% for mobilization and administration, a contingency of 30%, and engineering services including construction of 18% (based on total construction cost).

In addition to project capital costs, annual O&M costs are compared to arrive at a more complete picture of the alternative costs. A 40-year life-cycle cost analysis is provided for future system expansion alternatives as the pipe extensions and general infrastructure will be intended to last longer than 20-years. An average labor cost of \$75 per hour was used to estimate maintenance costs.

4.1. EXISTING PIPELINE CAPACITY ALTERNATIVES

When a collection system approaches capacity, action must be taken to ensure that manhole surcharging and sanitary sewer overflows do not occur. The existing trunklines in the City of Bellevue have been shown through computer modeling to lack adequate capacity in specific pipelines for existing and future peak hour flows in the associated planning area. For the 20-year planning period, existing capacity limitations are anticipated to occur within the 8-inch diameter trunkline along Chestnut St. between 2nd and 3rd St. There are several alternatives that can be utilized to address these deficiencies. A general description of each alternative explored for the deficiencies in the trunkline along Chestnut St. are discussed below:

4.1.1. Capacity Alternative 1: No Action

If the City chooses not to take action on addressing deficiencies in the system, the existing trunklines will limit growth potential in the future due to high flow events. As additional development occurs, the potential for surcharged pipelines will increase and may be at risk of backups and flooding, which pose significant environmental and human health risks. Ultimately, this option is not considered viable.



4.1.2. Capacity Alternative 2: Install Parallel Pipelines

The City could choose to construct parallel pipelines in areas with limited remaining capacity. This alternative would increase the system's capacity and generally costs less than full replacements. Another advantage of constructing parallel pipelines is that existing infrastructure could be left in service while the parallel pipelines are constructed. The downside of this alternative is the long-term increase in maintenance costs associated with maintaining parallel pipelines. An additional downside is the potential higher life-cycle costs associated with the eventual replacement or rehabilitation of the original pipeline. Given the age of the existing pipelines, this alternative is not recommended.

4.1.3. Capacity Alternative 3: Increase Capacity

This alternative includes increasing the system's capacity by installing a 12-inch diameter pipeline where the current 8-inch pipe creates a bottleneck on Chestnut St. The City could reconstruct pipelines that are approaching capacity with larger ones, or use trenchless technology, such as pipe bursting existing pipelines (typically limited to upsizing by one nominal pipe diameter), to increase capacity. By increasing the system's capacity, the City will be able to continue development. Upsizing could allow the City to expand its service area and mitigate risks of manhole surcharging and sanitary sewer overflows. The drawback to this alternative is the upfront capital cost associated with expanding capacity.

4.1.4. Existing Pipeline Capacity Alternative Evaluation

A summary of the advantages and disadvantages are shown in Table 4-1.

TABLE 4-1: PIPELINE CAPACITY ALTERNATIVES ADVANTAGES AND DISADVANTAGES

Alternative	Advantages	Disadvantages
Alternative 2 – Parallel Pipeline	<ul style="list-style-type: none"> Increases system capacity. Costs less than full replacement Existing infrastructure can be left in service during construction 	<ul style="list-style-type: none"> Long-term maintenance costs Potential higher life-cycle costs Existing pipe age
Alternative 3 – Increase Capacity	<ul style="list-style-type: none"> Increases system capacity Lower maintenance costs 	<ul style="list-style-type: none"> Higher upfront capital cost

The future collection system alternatives below in Section 4.3 were evaluated with the assumption that the 8-inch pipe on Chestnut St. was upsized to 12-inch pipe to increase the capacity in order to support future buildout.

Recommendation

The recommended alternative is Alternative 3, increase the capacity of the existing system by upsizing the 8-inch bottlenecking pipeline to a 12-inch. This alternative would provide more system capacity, allowing for future development. This recommended alternative is discussed further in Chapter 6.



4.2. PUMP STATIONS

Pump station existing conditions were summarized in Chapter 2, with input from the City's recent Critical Needs Assessment, as well as existing capacity limitations in the Main Lift Station as demonstrated by the 20-Year model. The deficiencies highlighted in Chapter 2 require some major as well as minor improvements to resolve. Capacity limitations identified show the Main Lift Station is undersized for expected peak 20-year flows. The Main Lift Station will be the limiting factor on the number of EDUs that can be added to the system. Due to the length of the force main, increasing the pump size at the Main Lift Station is not a feasible alternative (existing pipe velocities are approximately 3.8 feet per second). As a result, alternatives to increase the Main Lift Station capacity were evaluated along with servicing the area south of town (See Section 4.3). Recommended short- and long-term pump station condition and capacity improvements are summarized in Chapter 6.

4.3. FUTURE SYSTEM ALTERNATIVES

As previously stated, the City has received development interest to the north and to the south of town. The evaluation in Chapter 2 indicated that the infrastructure is in place to serve the north (with the exception of the Main Lift Station capacity). However, the southern area lacks a larger diameter pipe to support growth. The following three alternatives were selected for evaluation to increase the main lift station capacity and provide service to the south of town: 1) Continued Gravity Flow and New Parallel Force Main, 2) New Lift Stations and Force Main, and 3) New Regional Lift Station and Force Main.

4.3.1. Continued Gravity Flow and New Parallel Force Main

Figure 4-1 in Appendix A shows the future growth areas that are possible through this alternative. This alternative allows for the planned Strahorn Development, as well as future growth areas like the Oppenheimer Group Development and area southeast of Bellevue to become viable future growth areas. With this alternative, everything is gravity flown to the existing collection system and a parallel force main will be used to increase pump capacity from the Main Lift Station to the WWTP. The future growth area to the southeast that has been identified by this method could connect in at the southern-most point of the existing system by the Industrial Lift Station.

By choosing gravity flow as the method of service, future growth areas are very limited. This alternative provides the smallest service area in comparison to other alternatives identified. The City will maintain the existing Main Lift Station and only have one regional lift station to simplify maintenance, but this alternative is not easily phased, and maintenance of gravity and pressure lines is required.

4.3.2. Alternative 2: (2) New Lift Stations and Force Main

Figure 4-2 in Appendix A shows the future growth areas that are possible through this alternative. In addition to all areas that could be serviced by Alternative 1, much more land south of Bellevue becomes viable future growth areas. With this alternative, a new lift station will need to be constructed halfway between the south end of Bellevue and the WWTP. A new, smaller lift station will also need to be constructed at Gannet Rd. to the east. A new force main will connect to the two new lift stations to deliver flow to the treatment plant.

Developments to the south may be able to phase in infrastructure to lower the overall capital cost of this alternative. Lift station installations could also be phased, however, there are several disadvantages to this alternative. The addition of two lift stations provides two more lift stations to operate and maintain. There are both higher operational, maintenance, and capital costs.



4.3.3. Alternative 3: New Regional Lift Station and Force Main

Figure 4-3 in Appendix A shows the future growth areas that are possible through this alternative. This alternative will service the same areas as Alternative 2. A new regional lift station will be built out Gannet Rd. to service future growth areas. The existing force main between Bellevue and the WWTP will be removed, and the existing line will be redirected to connect to a new force main and then gravity flow down Gannet Rd. to the new regional lift station. From the regional lift station, a new force main will be built to connect and pump over to the WWTP.

This alternative can service the largest area with the least amount of lift stations. The Main Lift Station force main would be shortened, potentially reducing required maintenance. However, an existing portion of force main between Bellevue and the treatment plant will need to be abandoned. This alternative is not easily phased and requires the highest capital and operational costs.

4.3.4. Future System Alternative Evaluation

A summary of the advantages and disadvantages are shown in Table 4-2.

TABLE 4-2: FUTURE SYSTEM ALTERNATIVES ADVANTAGES AND DISADVANTAGES

Alternative	Advantages	Disadvantages
Alternative 1 – Gravity Flow and Parallel Force Main	<ul style="list-style-type: none"> Regional Lift Station to maintain Lowest capital cost 	<ul style="list-style-type: none"> Limits flexibility for serving future areas (smallest service area) Limits southern development potential Not easily phased Air release and clean-out maintenance
Alternative 2 – (2) New Lift Stations and Force Main	<ul style="list-style-type: none"> Could phase lift station installs Developments to south could phase in infrastructure 	<ul style="list-style-type: none"> 2 additional lift stations to operate and maintain High capital cost alternative Highest operational cost Main Lift Station Air release and Clean-out maintenance required
Alternative 3 – New Regional Lift Station and Force Main	<ul style="list-style-type: none"> Serves largest area with the least number of lift stations Potentially reduces force main maintenance Shortens Main LS force main 	<ul style="list-style-type: none"> Abandons existing portion of force main Not easily phased Highest capital cost alternative High operational cost

A preliminary 40-year life cycle cost comparison of the alternatives is summarized in Table 4-3.



TABLE 4-3: FUTURE SYSTEM ALTERNATIVES COST COMPARISON (2022)

Item	Alt 1 - Gravity Flow	Alt 2 - Two Lift Stations	Alt 3 - Regional Lift Station
10-inch Force Main	\$ 2,592,000	-	-
8-inch Force Main	-	\$ 568,000	\$ 110,000.00
12-inch Force Main	-	\$ 1,683,000	\$ 2,535,000.00
18-inch Pipe - Excavation, Backfill	-	-	\$ 2,043,000.00
Full Lane Surface Repair	-	-	\$ 490,000.00
60-inch Standard Manhole	-	-	\$ 444,000.00
Local Lift Station	-	\$ 1,250,000	-
Regional Lift Station	-	\$ 2,500,000	\$ 2,500,000.00
Gravel Surface Repair	\$ 480,000	\$ 129,000	-
Pavement Repair	\$ 200,000	-	-
Traffic Control - With Flagging	\$ 192,000	-	\$ 57,000.00
Connect to Existing System	\$ 15,000	-	\$ 15,000.00
Existing Utility Protection	\$ 154,000	-	-
Highway Bore	-	\$ 100,000	\$ 100,000.00
Mechanical and Instrumentation (Flow Meter, Air Release, Clean-outs)	\$ 195,000	\$ 35,000	\$ 65,000.00
Improvements Subtotal	\$ 3,828,000	\$ 6,265,000	\$ 8,359,000
<i>General Conditions</i>	\$ 382,800	\$ 626,500	\$ 835,900
Subtotal	\$ 4,211,000	\$ 6,892,000	\$ 9,195,000
<i>Contingencies</i>	\$ 1,263,300	\$ 2,067,600	\$ 2,758,500
Subtotal	\$ 5,475,000	\$ 8,960,000	\$ 11,954,000
<i>Contractor OH&P</i>	\$ 821,250	\$ 1,344,000	\$ 1,793,100
Engineer's Opinion of Probable Construction Cost	\$ 6,297,000	\$ 10,304,000	\$ 13,748,000
Permitting	\$ 15,000	\$ 15,000	\$ 21,000.00
Property Acquisition (~4 acres)		\$ 160,000	\$ 80,000.00
Geotechnical Investigation	\$ 30,000	\$ 36,000	\$ 36,000.00
Surveying	\$ 40,000	\$ 50,000	\$ 50,000.00
Legal, Administrative, and Funding	\$ 24,000	\$ 28,000	\$ 35,000.00
Total Project Cost	\$ 6,406,000	\$ 10,593,000	\$ 13,970,000
Estimated Annual O&M	\$ 89,000	\$ 221,000	\$ 133,000
40-Year Life Cycle Cost	\$ 7,940,000	\$ 14,390,000	\$ 16,260,000



Recommendation

The recommended alternative is Alternative 1, gravity flowing future developments to connect into the existing system and constructing a parallel force main. This alternative is the lowest capital cost and limits the number of lift stations that need to be operated and maintained, while providing service to future planned developments. Additionally, City staff indicated that expansion beyond the service area presented Alternative 1 is not likely. This recommended alternative is discussed further in Chapter 6.

The City does not have plans at this time to build a lift station to service existing non-sewered residences south of current city limits that cannot be served by gravity. This includes the future growth areas south of the ones identified in Figure 4-1 in Appendix A. However, the City would be open to the extension of gravity lines to allow for connections to the existing system for non-sewered residences that could be served by gravity, as shown in Figure 4-1 in Appendix A.

4.4. ALTERNATIVES GENERAL IMPACT SUMMARY

The potential environmental impacts of the alternatives are summarized in the following section.

4.4.1. Land Use / Prime Farmland / Formally Classified Lands

All alternatives identified contain future developments that are located within farmland of state and local importance, as well as prime farmland. Should future developments be constructed within undisturbed prime farmland, special care should be taken to not alter the quality of farmland to remain.

4.4.2. Floodplains / Wetlands

The City of Bellevue is within a floodplain. Any facilities to be developed would need to consider proximity to the Big Wood River and ensure that it be located above the reported flood elevations and/or be flood proofed. Special provisions for manholes (i.e., sealed manhole lids) located below flood elevations should be considered as part of design to mitigate flood waters from entering the collection system. As shown in Figure 1-2 of Chapter 1, none of the alternative future development areas would be located in wetland areas.

4.4.3. Cultural, Biological, and Water Resources

Priority pipeline improvements are anticipated to be located within previously disturbed and developed areas and as such it is not anticipated that any of the alternatives will interfere with cultural resources. Most of the improvements being evaluated are on previously disturbed lands, or lands that will be disrupted through future development. When future development occurs, efforts should be made to not significantly impact biological resources if they are present. It is not anticipated that improvements to the collection system will negatively impact local water resources. Maintaining a quality collection system will mitigate concerns from exfiltration and sanitary sewer overflows.

4.4.4. Socio-Economic Conditions

Alternatives are not anticipated to have a disproportionate effect on any segment of the population (economic, social, or cultural status). The main economic effect is the cost of the alternatives.



4.4.5. Land Requirements

Existing collection system pipeline improvements are anticipated to occur within existing right-of-ways. Some future system improvements are anticipated to occur within existing right-of-ways as well, although some easements or development dedicated right-of-way will be required. The majority of future pipelines outside of the existing City limits are development-based. As such, it is not anticipated that major land purchases will be required to accommodate the collection system alternatives. The purchasing of easements may be required for developments not directly adjacent to the existing system, where gravity and pressure pipelines will convey flow through land not owned by the developer. All other alternatives are located within the existing roadways and easements.

4.4.6. Potential Construction Problems

The depth of the water table may affect the construction of the alternatives. However, subsurface investigations were not within the scope of this project. Construction techniques to effectively manage excavation, dewatering, and sloughing issues should be required of any construction plans. Construction plans for any of the alternatives should also include provisions to control dust and runoff.

4.4.7. Sustainability Considerations

Sustainable utility management practices include environmental, social, and economic benefits that aid in creating a resilient utility. The construction of lift stations may increase the collection system's energy usage and staffing requirements to maintain. While the incorporation of more energy efficient options like VFD pumps may lead to more efficient pumping of wastewater, the City should plan to ultimately flow its wastewater via gravity pipelines where feasible, which eliminates a source of energy usage in the system.

CITY OF BELLEVUE
NOTICE OF PUBLIC COMMENT PERIOD

The City of Bellevue, Blaine County, Idaho, will be accepting comments from the public regarding the City of Bellevue Wastewater Facility Planning Study and Environmental Document concerning the proposed wastewater system improvements. The wastewater facility planning study, environmental document, and the proposed wastewater system improvements with maps showing the proposed alternatives are available for viewing at Bellevue City Hall, and on the City of Bellevue website: www.bellevue.us.

The public comment period will be from Wednesday, July 3, 2024, and will end on Monday, July 22, 2024. Written comments will be accepted at the scheduled public meeting, at Bellevue City Hall, 115 East Pine Street, PO Box 825, Bellevue, Idaho 83313, and emailed to mvestsnarr@bellevueidaho.us. City hall is open from 7:00 am to 5:30 pm, Monday through Thursday and the city telephone number is 208-788-2128.

The public comment meeting will be held from 5:30 pm to 6:30 pm on July 22, 2024, during the regularly scheduled Common Council meeting where details of the project options will be outlined and verbal comments received. The City Council will have the opportunity to formally select the preferred alternative at the July 22, 2024, Common Council Meeting.

/s/ Michelle Snarr
City Clerk
City of Bellevue, Idaho

Published July 3 and 10, 2024

CIUDAD DE BELLEVUE

AVISO DE PERIODO DE COMENTARIOS PÚBLICOS

La ciudad de Bellevue, condado de Blaine, Idaho, aceptará comentarios del público sobre el estudio de planificación de instalaciones de aguas residuales y el documento ambiental de la ciudad de Bellevue sobre las mejoras propuestas al sistema de aguas residuales. El estudio de planificación de las instalaciones de aguas residuales, el documento ambiental y las mejoras propuestas al sistema de aguas residuales con mapas que muestran las alternativas propuestas están disponibles para su visualización en el Ayuntamiento de Bellevue y en el sitio web de la ciudad de Bellevue: www.bellelvue.us.

El período de comentarios públicos comenzará el miércoles 3 de julio de 2024 y finalizará el lunes 22 de julio de 2024. Se aceptarán comentarios escritos en la reunión pública programada, en Bellevue City Hall, 115 East Pine Street, PO Box 825, Bellevue, Idaho 83313, y enviado por correo electrónico a mvestsnarr@bellevueidaho.us. El ayuntamiento está abierto de 7:00 am a 5:30 pm, de lunes a jueves y el número de teléfono de la ciudad es 208-788-2128.

La reunión de comentarios públicos se llevará a cabo de 5:30 p.m. a 6:30 p.m. el 22 de julio de 2024, durante la reunión del Consejo Común programada regularmente donde se describirán los detalles de las opciones del proyecto y se recibirán comentarios verbales. El Concejo Municipal tendrá la oportunidad de seleccionar formalmente la alternativa preferida en la Asamblea Común del Concejo del 22 de julio de 2024.

/s/ Michelle Snarr
Secretario Municipal
Ciudad de Bellevue, Idaho

Publicado el 3 y 10 de julio de 2024



City of Bellevue PUBLIC COMMENT

Date of Meeting

Please select one of the following:

☐

Support

☐

Do Not Support

Agenda Item Number

Topic

Name

Address (required for minutes)

E-mail Address (Optional)

Telephone Number (Optional)

Comments

Please selection one of the following:

☐

Resident

☐

Non-Resident

☐

Other

(Self, Name of Organization or Other)

Note: This is a Public Document



City of Bellevue

City of Bellevue
Regular Common Council Meeting
July 22, 2024

Agenda Item 5: PARK FEE WAIVER/REDUCTION – MEMORIAL PARK

Consideration of Fee Waiver and/or Reduction of Fees for Memorial Park of \$680 for September 1 and September 2, 2024, for the Bellevue Labor Day Celebration:

Action Item: Parks | Clerk's Office

Note: Stefany Mahoney, organizer, Bellevue Labor Day Celebration. An annual event held every year in the City of Bellevue.

Suggested Motion: There are multiple options for a motion.

- 1. Move** to Approve the waiver of fees for the Memorial park in the amount of \$680 for Stefany Mahoney, Bellevue Labor Day Celebration.
- 2. Move** to Approve a reduction of fees in the amount of \$ _____, for the Memorial park for Stefany Mahoney, Bellevue Labor Day Celebration.
- 3. Move** to deny the request of a fee waiver/reduction for the Memorial park for Stefany Mahoney, Bellevue Labor Day Celebration.

Attachment(s): Park Application



\$680

City of Bellevue

115 E Pine Street
P. O. Box 825 Bellevue, ID 83313
208-788-2128 Fax 208-788-2092

Memorial Park ☒
O'Donnell Park ☐
Howard Preserve ☐

Bellevue Parks Application

APPLICANT INFORMATION

Name: Bellevue Labor Day Celebration
Phone#: 208 720 8227 Fax#: _____ Cell#: _____
Physical Address: _____
Mailing address: POB 229, Bellevue, ID 83313
Email Address: bellevue labor day@yahoo.com
Date(s) of use: Sept 1st & 2nd Times(s) of use: 11am - 8pm
Park to be used: ☒ Memorial ☐ O'Donnell ☐ Howard Preserve
Type of Event: Bellevue Labor Day Celebration
Catered Event: ☒ YES ☐ NO (must have both catering & alcohol permit to cater/food)
Beer or Wine served (must have alcohol permit): ☒ YES ☐ NO
Food service: ☒ YES ☐ NO (Department of Health & Welfare approval- Please attach the report to this application)

ORGANIZATION INFORMATION

Name: Bellevue Labor Day Celebration
Phone #: 208 720 8227 Fax #: _____ Cell #: _____
Mailing Address: POB 229, Bellevue ID 83313
Email Address: bellevue Labor Day Celebration
Estimated Number of people: 1000

Consent:

- Park and associated fees shall be submitted with this application and are non-refundable.
- A credit card will be required at time of reservation; a damage deposit fee of \$80.00 may be applied if necessary.
- The applicant shall be reliable for any, and all damages to the city property during their reservation.
- The application and fees must be submitted at least 30 days prior to the reservation date.
- Additional Fees will be applied as needed for additional staff labor requirements at \$45/hr.
- For weekend and evening events, arrangements for keys will need to be made between 8am-5pm, Monday- Friday at Bellevue City Hall.
- All parking shall comply with the parks, parking rules and restrictions. Violators will be fined.
- Event insurance shall be provided by the sponsor and attached with this application, unless waived by the Council; List City of Bellevue as "additional insured".
- The park reservation permit gives your organization exclusive use of the proposed areas for your designated times ONLY. However, it does not exclude park users from public areas (i.e. open space, restrooms, tot play area). Reservations are made strictly on a first come-first serve basis. We strongly discourage the use of glass containers at all city parks. Camping IS NOT ALLOWED. Dogs are not allowed to run at large. Please pick up after your pets.
- For events with more than 100+ people, Clear Creek recommends additional porta potties: for 100+ 2=\$50/ for 250+ x3=\$75/ for 500+ x4=\$100
- For events with 100+/ (2) Disposable garbage cans will be added \$14.00 Fee
- All parks close at 10 P.m.
- Please leave all areas as you found them for others to enjoy.
- Per City code, Title 4; 4-2-2; "plainly audible noise upon a public right-of-way or street at a distance of fifty feet (50') or more from the source of such sound is prohibited unless approved prior to the event. (music events)
- City of Bellevue may give precedence to the Bellevue area events. (Labor Day etc.)

PARK INFORMATION

Memorial Park: *Non-Profit Organization (driver's license required)*

☐ Covered Area ☒ Green space/ Stage

Covered Area:

½ day rate (4 hours) = \$45.00 / Full day rate (8 hours) = \$90.00

Green space/ Stage:

100 or less people: ½ day rate (4 hours) = \$65.00 / full day (8 hours) = \$150.00

100 or more people: ½ day rate (4 hours) = \$150.00 / full day (8 hours) = \$300.00 $\times 2 = 600 + 980 \text{ deposit}$

O'Donnell Park: (Per Resolution #2145) *Non-Profit Organization (driver's license required)*

☐ Soccer fields ☐ Baseball field ☐ Snack shack

Snack Shack only: \$10/hr.

Softball:

Monthly fees= \$260

Season fee (3 months)= \$780.00

Refundable deposit= \$200.00

Soccer:

Monthly fees= \$260

Season fee (3 months) = \$780

Refundable deposit= \$200.00

\$680

Howard Preserve: *Non-Profit Organization (driver's license required)*

- Limited to two (2) events per year
- Applicants shall notify Irrigation Districts including WRVID #45 and the Triangle District- 208-695-6828.
- Preserve shall be returned to its original condition prior to the event within 48 hours following the event.
- Restricted areas shall not be used for any event.
- The Elm Street gate shall remain closed except for city and emergency use.
- Notice of the event shall be provided to the "Friends of the Howard Preserve" no less than 60 days prior to the event.
- Prior approval from the City Council is required.
- Event reservations shall include plans for parking, traffic control, additional restrooms and trash receptors, emergency access, power sources and temporary lighting.

100 or less people: ½ day rate (4 hours) = \$45.00 / full day (8 hours) = \$90.00

100 or more people: ½ day rate (4 hours) = \$130.00 / full day (8 hours) = \$260.00

Triangle Irrigation District- Head gate Policy:

District Head gates on the Big Wood River are on Bellevue City property. Irrigation districts have explicit easements wherever their work on canals exist. Irrigation district works & canals are inherently dangerous structures and locations. The district only recognizes trained personal or subcontractors as having the legal right and authorization to be in, on or around the works and canals. No trespassing or swimming. Signs are posted and the head gate area is chained off.

This form with payment must be submitted within 30 days of reservation date. Requests for waiver fees shall be submitted to the Bellevue City Council no more than 30 days after the event. Requests for amplified sound/ concerts shall require the applicant to post the park 7 days prior to the event and get prior approval.

- A copy of non-profit with documentation
- Driver's license may be required
- Your event is a "Special Event" if it meets either of the following criteria: 1) it will require a street closure within any zoning district, or 2) it is anticipated to attract 200 or more people at any one time within any zoning district. Special Event application procedures and additional fees apply- See City Code Title 4 §4-2-4.
- If your event needs electrical support, please describe your needs and attach it to the application.
- All parks use-age shall be subject to field conditions.

- In the case of more than one application for the same time period, the City of Bellevue will permit the first COMPLETE application filed.

PARK FEES:Total Park Fee: \$ 300 x 2 = 600

Clear Creek 100+: \$ _____

Disposable Garbage Cans 100+ (x2)\$ _____

Total Owed: \$ _____

Credit Card will be held on file for \$80.00 damage deposit that may be charged if necessary.*\$680Applicant Signature: Selany Mahoney Date: 07/08/24City Use Only:**Date reservation/payment received: Sept 1
Sept 2Staff Initial: mg**Department approval:**P/W: Approved ☐ _____ Date ____/____/____Fire: Approved ☐ _____ Date ____/____/____Marshal: Approved ☐ _____ Date ____/____/____



City of Bellevue

City of Bellevue
Regular Common Council Meeting
July 22, 2024

Agenda Item 6a: Approval of Common Council Meeting Minutes
May 13, 2024, Regular Meeting Minutes

Action Item: Clerk's Office, Michelle Snarr

Note:

Suggested Motion: Move to Approve the "Consent Agenda" as: *amended, corrected, or as presented*

Attachment(s): Draft - May 13, 2024, Common Council Regular Meeting Minutes



City of Bellevue

City of Bellevue
Regular Common Council Meeting
July 22, 2024

Agenda Item 6b: Approval of Claims
July 9, 2024, through July 22, 2024

Action Item: Treasurer's Office: Shelly Shoemaker

Note: N/A

Suggested Motion: Move to Approve the "Consent Agenda" as: *amended, corrected, or as presented*

Attachment(s): Claims Payable by **Account** – July 9, 2024, through July 22, 2024
Claims Payable by **Class** – July 9, 2024, through July 22, 2024

07/17/24

City of Bellevue CLAIMS PAYABLE

July 9 - 22, 2024

Date	Num	Name	Memo	Class	Split	Credit
01 - Admin						
07/22/2024	39353445	Quill Corporation	Office Supplies	01 - Admin	-SPLIT-	85.57
07/22/2024	39256548	Quill Corporation	Adjustable Table - Council Chambers	01 - Admin	52010 · Office Supplies	103.99
07/22/2024	070624	Vest Snarr, Michelle	Reimbursement - office supplies	01 - Admin	52010 · Office Supplies	25.42
07/22/2024	062620	Jane's Artifacts	Office Supplies	01 - Admin	52010 · Office Supplies	43.97
07/22/2024	063024	South Valley Storage Comp...	July Rent - Unit #F-13	01 - Admin	52085 · Storage	63.00
07/22/2024	0011166553	Pitney Bowes Global Financ...	Lease - Postage Equipment - 5/3/24 - 8/2/24	01 - Admin	51180 · Office Equipment Rental...	192.30
07/22/2024	070524	Cox Business Services	Internet & Telephone Usage	01 - Admin	-SPLIT-	1,256.96
07/22/2024	7994	City of Ketchum	Resort City Coalition	01 - Admin	51080 · Dues & Memberships	175.00
07/22/2024	106355	White Cloud Communicatio...	Radio Service - April 2024	01 - Admin	-SPLIT-	60.00
07/22/2024		Allington, Frederick	Monthly Payment - August	01 - Admin	51145 · Legal - Prosecuting Atto...	1,800.00
Total 01 - Admin						3,806.21
03 - P & Z						
07/22/2024	071024	Division of Building Safety	FY 2024- Contract Payment for June	03 - P & Z	51073.1 · DBS Contract Labor	706.28
Total 03 - P & Z						706.28
05 - Fire						
07/22/2024	070524	AFBA	Life Insurance - Fire Dept.	05 - Fire	50014 · Insurance - Life	80.00
07/22/2024	608902	Hughes Fire Equipment Inc.	New valve for Engine 1	05 - Fire	-SPLIT-	136.22
07/22/2024	192296	Napa Auto Parts	Supplies for hazmat call	05 - Fire	52090 · Supplies	28.98
07/22/2024	11700879869	Les Schwab	New Tire - Engine 3	05 - Fire	51163 · R & M - Equipment (non-...	454.97
Total 05 - Fire						700.17
07 - Library						
07/22/2024	H-0103537	OverDrive, Inc.	Participation in Idaho Digital Consortium	07 - Library	51062 · Computers - Software & ...	900.00
07/22/2024	061124	Atkinson's Market	Supplies for Library	07 - Library	55010 · Library Programs	13.32
Total 07 - Library						913.32
08 - Marshal						
07/22/2024	CL60383	United Oil	Acct. #1001448 - Fuel - Marshal's Dept.	08 - Marshal	-SPLIT-	786.92
07/22/2024	332960	Minert & Associates, Inc.	Collection Fee/Drug Test	08 - Marshal	-SPLIT-	162.00
07/22/2024	INUS260778	Axon Enterprises, Inc.	Lease bundle - Fleet Cameras	08 - Marshal	57000 · Safety Equipment	7,625.28
Total 08 - Marshal						8,574.20
09 - B & G						
07/22/2024		Gardner, Robert	Rent	09 - B & G	58190 · Real Property Lease Exp	125.00
Total 09 - B & G						125.00
10 - Streets						
07/22/2024	CL60384	United Oil	Acct. #1001449 - Fuel - Streets	10 - Streets	51110 · Fuel	67.58
07/22/2024	CL60385	United Oil	Acct. #1001451 - Fuel - Streets - Equipment	10 - Streets	51110 · Fuel	99.49
07/22/2024	223049	Gern State Welders Supply ...	Oxygen & Acetylene	10 - Streets	52090 · Supplies	9.30
Total 10 - Streets						176.37
20 - Water						
07/22/2024	080159/9	Valley Wide Cooperative	Conduit clamp & strap	20 - Water	-SPLIT-	6.07
07/22/2024	31699	Water Dynamics, LLC dba ...	Drinking Water Samples	20 - Water	52110 · Test Samples - Water & ...	144.00
Total 20 - Water						150.07
30 - Wastewater						
07/22/2024	CL60382	United Oil	Acct. #1001450 - Fuel - Wastewater	30 - Wastewater	-SPLIT-	191.03
07/22/2024	31700	Water Dynamics, LLC dba ...	Coliform, Nitrate, Nitrite, Phosphorus, Chloride ...	30 - Wastewater	52110 · Test Samples - Water & ...	1,278.00
07/22/2024	2024100110269	Thatcher Company	Citric Acid 50% Solution Drum	30 - Wastewater	52090 · Supplies	1,253.20
Total 30 - Wastewater						2,722.23
TOTAL						17,873.85



City of Bellevue

City of Bellevue
Regular Common Council Meeting
July 22, 2024

Agenda Item 6c: Department Head Reports
Month of June 2024

Action Item: No Action | Informational Purposes Only

Note:

Attachment(s): Fire Department Report, Chief Greg Beaver
Marshal's Office Report, Kirt Gaston



Bellevue Fire Department

115 East Pine St. • P.O. Box 825 • Bellevue Idaho, 83313
Phone (208) 788-9277 • Fax (208) 788-2092

07-02-24
Bellevue Fire Dept.
Council report for 07-22-24

Incident Type for 2024 - 60

Incidents from 01-01-24 to 07-02-24
Average Turnout per Incident is **3**
Overall Average Response Time is **06:88**.

Incident Type for 2024

15 Fires
1 Overpressure Rupture
17 Rescue & Emergency Medical Service
7 Hazardous Condition (no fire)
4 Service Call
9 Good Intent Calls
6 False Alarms & False Call
1 Severe Weather & Natural Disaster
We had **60** Total Incidents in **2024**

We are looking for firefighters. If you know anyone that lives in Bellevue and is interested in giving back to their community, send them my way.

Wild land fire season is here, be safe with fire. Our new to us fire truck is getting put in service slowly but surely.

Sincerely

Greg Beaver
Bellevue Fire Chief



Basic Incident Type Code And Description (FD1.21)	Total Incidents	Total Incidents Percent of Incidents	Total Property Loss	Total Content Loss	Total Loss	Total Loss Percent of Total
Incident Type Category (FD1.21): 1 - Fire						
111 - Building fire	1	6.25%				
112 - Fires in structure other than in a building	1	6.25%				
118 - Trash or rubbish fire, contained	1	6.25%				
131 - Passenger vehicle fire	1	6.25%				
142 - Brush or brush-and-grass mixture fire	1	6.25%				
Total: 5		Total: 31.25%	Total: 0.00	Total: 0.00	Total: 0.00	Total: 0.00%
Incident Type Category (FD1.21): 3 - Rescue & Emergency Medical Service Incident						
324 - Motor vehicle accident with no injuries.	5	31.25%				
Total: 5		Total: 31.25%	Total: 0.00	Total: 0.00	Total: 0.00	Total: 0.00%
Incident Type Category (FD1.21): 4 - Hazardous Condition (No Fire)						
422 - Chemical spill or leak	1	6.25%				
Total: 1		Total: 6.25%	Total: 0.00	Total: 0.00	Total: 0.00	Total: 0.00%
Incident Type Category (FD1.21): 5 - Service Call						
510 - Person in distress, other	1	6.25%				
542 - Animal rescue	1	6.25%				
Total: 2		Total: 12.50%	Total: 0.00	Total: 0.00	Total: 0.00	Total: 0.00%
Incident Type Category (FD1.21): 6 - Good Intent Call						
611 - Dispatched and cancelled en route	1	6.25%				
650 - Steam, other gas mistaken for smoke, other	1	6.25%	0.00	0.00	0.00	
Total: 2		Total: 12.50%	Total: 0.00	Total: 0.00	Total: 0.00	Total: 0.00%
Incident Type Category (FD1.21): 7 - False Alarm & False Call						
743 - Smoke detector activation, no fire - unintentional	1	6.25%				
Total: 1		Total: 6.25%	Total: 0.00	Total: 0.00	Total: 0.00	Total: 0.00%
Total: 16		Total: 100.00%	Total: 0.00	Total: 0.00	Total: 0.00	Total: 0.00%

Bellevue Marshal's Office



115 E Pine Street
PO Box 825
Bellevue, ID 83313
Phone: 208-788-3692
Fax: 208-788-8526

City Council Report

Date: 07/01/2024

June Report

The Bellevue Marshal's Office responded to 311 calls for service (CFS) resulting in 28 case reports, 59 citations, 14 arrests. We are continuing block training over the next several months. We have been covering the City with three officers 24/7. Deputy Thayer is taking time off in June for vacation and a family wedding. June was a little slower than May however some of cases and calls for service were time consuming.

If you ever have questions please feel free to contact me.

Year to Date

Call for service	2,035
Case Reports	155
Citations	539
Arrests	60

Thank you,

K. Gaston



Bellevue Marshal's Office
115 E Pine Street
PO Box 825
Bellevue, ID 83313
208-7883692

BMO Citation - By Officer, By Offense

Printed on July 1, 2024

[Citation->Issued Date/Time] is between '2024-06-01 00:00:00' and '2024-06-30 23:59:59' and

[Involvement->Case->Primary Officer->Agency->Name] is in this list 'E'Bellevue Marshal's Office"

Ticket #

Gaston, Kirtus

BEP350-0568

BEP350-0569

MOTOR VEHICLES - DRIVERS LICENSE FAIL TO PURCHASE/INVALID Total: 2

BEP350-0567

MOTOR VEHICLES - FAIL TO YIELD TO PEDESTRIAN IN CROSSWALK Total: 1

3603

MOTOR VEHICLES - REGISTRATION - FAIL TO REGISTER ANNUALLY Total: 1

BEP350-0561

BEP350-0565

BEP350-0566

3603

MOTOR VEHICLES - SPEED - EXCEED MAXIMUM SPEED LIMIT Total: 4

BEP350-0563

MOTOR VEHICLES - SPEED - EXCEED MAXIMUM SPEED LIMIT - commercial vehicle Total: 1

BEP350-0560

BEP350-0562

MOTOR VEHICLES - STOP SIGN - FAIL TO STOP/YIELD FROM Total: 2

3602

PROVIDING FALSE INFORMATION TO LAW ENFORCEMENT, GOVERNMENT AGENCIES Total: 1

3602

RESISTING AND OBSTRUCTING OFFICERS Total: 1

Gaston, Kirtus Total: 13

Shelamer, Mike

BEP365-0512

BEP365-0526

DRIVING UNDER THE INFLUENCE - misdemeanor Total: 2

BEP365-0518

DRIVING WITHOUT PRIVILEGES - misdemeanor Total: 1

BEP365-0527

MOTOR VEHICLES - DRIVERS LICENSE FAIL TO PURCHASE/INVALID Total: 1

BEP365-0532

Ticket #

BEP365-0516

BEP365-0515

MOTOR VEHICLES - DRIVERS LICENSE - INFRACTION Total: 3

BEP365-0530

BEP365-0522

MOTOR VEHICLES - FAIL TO PROVIDE PROOF OF INSURANCE - infraction Total: 2

BEP365-0525

**MOTOR VEHICLES - FAIL TO STOP WHEN EMERGING FROM ALLEY, DRIVEWAY, BUILDING
Total: 1**

BEP365-0517

BEP365-0513

MOTOR VEHICLES - IMPROPER RIGHT TURN Total: 2

BEP365-0511

BEP365-0514

BEP365-0519

BEP365-0520

BEP365-0521

BEP365-0524

BEP365-0529

MOTOR VEHICLES - SPEED - EXCEED MAXIMUM SPEED LIMIT Total: 7

BEP365-0531

MOTOR VEHICLES - WINDSHIELD VIOLATIONS Total: 1

BEP365-0528

**PROVIDING FALSE INFORMATION TO LAW ENFORCEMENT, GOVERNMENT AGENCIES Total:
1**

3421

RESISTING AND OBSTRUCTING OFFICERS Total: 1

Shelamer, Mike Total: 22

Thayer, Joseph

3456

BMO - Barking/frequent, Continuous or Untimely Barking Total: 1

BEP370-0390

DRIVING UNDER THE INFLUENCE - misdemeanor Total: 2

BEP370-0388

DRIVING WITHOUT PRIVILEGES - misdemeanor Total: 1

BEP370-0389

MOTOR VEHICLES - COLOR OF LAMPS/GLOBES LIMITED TO CERTAIN VEHICLES Total: 1

BEP370-0391

BEP370-0389

BEP370-0387

Ticket #

MOTOR VEHICLES - DRIVERS LICENSE FAIL TO PURCHASE/INVALID Total: 3

BEP370-0395

BEP370-0391

MOTOR VEHICLES - FAIL TO PROVIDE PROOF OF INSURANCE - infraction Total: 2

BEP370-0387

BEP370-0394

MOTOR VEHICLES - REGISTRATION - FAIL TO REGISTER ANNUALLY Total: 2

BEP370-0398

BEP370-0395

BEP370-0393`

BEP370-0399

BEP370-0391

BEP370-0396

BEP370-0397

MOTOR VEHICLES - SPEED - EXCEED MAXIMUM SPEED LIMIT Total: 7

Thayer, Joseph Total: 19

Total Records: 54



Bellevue Marshal's Office
115 E Pine Street
PO Box 825
Bellevue, ID 83313
208-7883692

Cases by Month

Printed on July 1, 2024

	Start Date/Time	Primary Officer	Statutes/Offenses	Disposition
BMO20240154	06/27/24 21:04	Shelamer, Mike	19-512 - WARRANT ARREST FEL	19-512 - WARRANT
BMO20240155	06/28/24 00:21	Shelamer, Mike	18-8004(1)(A) (M) - DRIVING	18-8004(1)(A) (M) -
BMO20240153	06/26/24 08:07	Gaston, Kirtus	OFF-CIVIL - OFFICER REPORT -	OFF-CIVIL - OFFICER
BMO20240128	06/01/24 18:14	Shelamer, Mike	18-8004(1)(A) (M) - DRIVING	18-8004(1)(A) (M) -
BMO20240152	06/22/24 21:45	Shelamer, Mike	19-512 - WARRANT ARREST MIS;	19-512 - WARRANT
BMO20240146	06/17/24 23:50	Thayer, Joseph	18-8004(1)(A) (M) - DRIVING	18-8004(1)(A) (M) -
BMO20240150	06/20/24 23:36	Shelamer, Mike	18-705 - RESISTING AND	18-705 - RESISTING
BMO20240151	06/21/24 13:46	Gaston, Kirtus	18-7001 - MALICIOUS INJURY TO	18-7001 - MALICIOUS
BMO20240148	06/20/24 12:19	Gaston, Kirtus	18-903 - BATTERY	18-903 - BATTERY
BMO20240149	06/20/24 13:22	Gaston, Kirtus	19-512 - WARRANT ARREST MIS	19-512 - WARRANT
BMO20240143	06/14/24 16:44	Shelamer, Mike	OFF-WELFARE - OFFICER	OFF-WELFARE -
BMO20240144	06/16/24 02:30	Shelamer, Mike	18-8004(1)(A) (M) - DRIVING	18-8004(1)(A) (M) -
BMO20240145	06/16/24 17:49	Shelamer, Mike	Traffic Crash;	Traffic Crash;
BMO20240141	06/12/24 09:08	Gaston, Kirtus	25-2810 - Dangerous and At-Risk	25-2810 - Dangerous
BMO20240142	06/12/24 14:14	Gaston, Kirtus	OFF-WELFARE - OFFICER	OFF-WELFARE -
BMO20240139	06/10/24 00:37	Gaston, Kirtus	5.09 - BMO - Dog Running at Large	5.09 - BMO - Dog
BMO20240140	06/10/24 11:56	Gaston, Kirtus	20-222 - PROBATION VIOLATION	20-222 - PROBATION
BMO20240138	06/09/24 17:14	Thayer, Joseph	OFF-CIVIL - OFFICER REPORT -	OFF-CIVIL - OFFICER
BMO20240136	06/07/24 22:00	Thayer, Joseph	18-8004(1)(A) (M) - DRIVING	18-8004(1)(A) (M) -
BMO20240137	06/09/24 01:11	Thayer, Joseph	OFF-JUVENILE - OFFICER	OFF-JUVENILE -
BMO20240133	06/05/24 20:43	Shelamer, Mike	18-8001 - DRIVING WITHOUT	18-8001 - DRIVING
BMO20240134	06/07/24 06:09	Gaston, Kirtus	UNATT - UNATTENDED DEATH	UNATT -
BMO20240135	06/07/24 10:13	Gaston, Kirtus	18-6101 - RAPE	18-6101 - RAPE
BMO20240130	06/03/24 19:05	Thayer, Joseph	18-8001 - DRIVING WITHOUT	18-8001 - DRIVING
BMO20240131	06/03/24 20:48	Thayer, Joseph	5.103 - BMO - Barking/frequent,	5.103 - BMO -
BMO20240132	06/04/24 07:59	Gaston, Kirtus	49-807(2) - MOTOR VEHICLES -	49-807(2) - MOTOR
BMO20240129	06/03/24 16:28	Gaston, Kirtus	OFF - OFFICER REPORT	OFF - OFFICER
BMO20240147	06/18/24 15:51	Gaston, Kirtus	20-222 - PROBATION VIOLATION	20-222 - PROBATION

Total Records: 28





City of Bellevue

City of Bellevue
Regular Common Council Meeting
July 22, 2024

Agenda Item 7a: NEW BUSINESS:

Consideration of discussion and possible recommendation for the City to Advertise/Request Invitation to Bids for Professional Appraisal Services; including but not limited to financial cost parameters for 61.01 acres of city owned property, Blaine County Parcel Number RPB041700000B0 (north of Cowcatcher Loop and east of Slaughterhouse road)

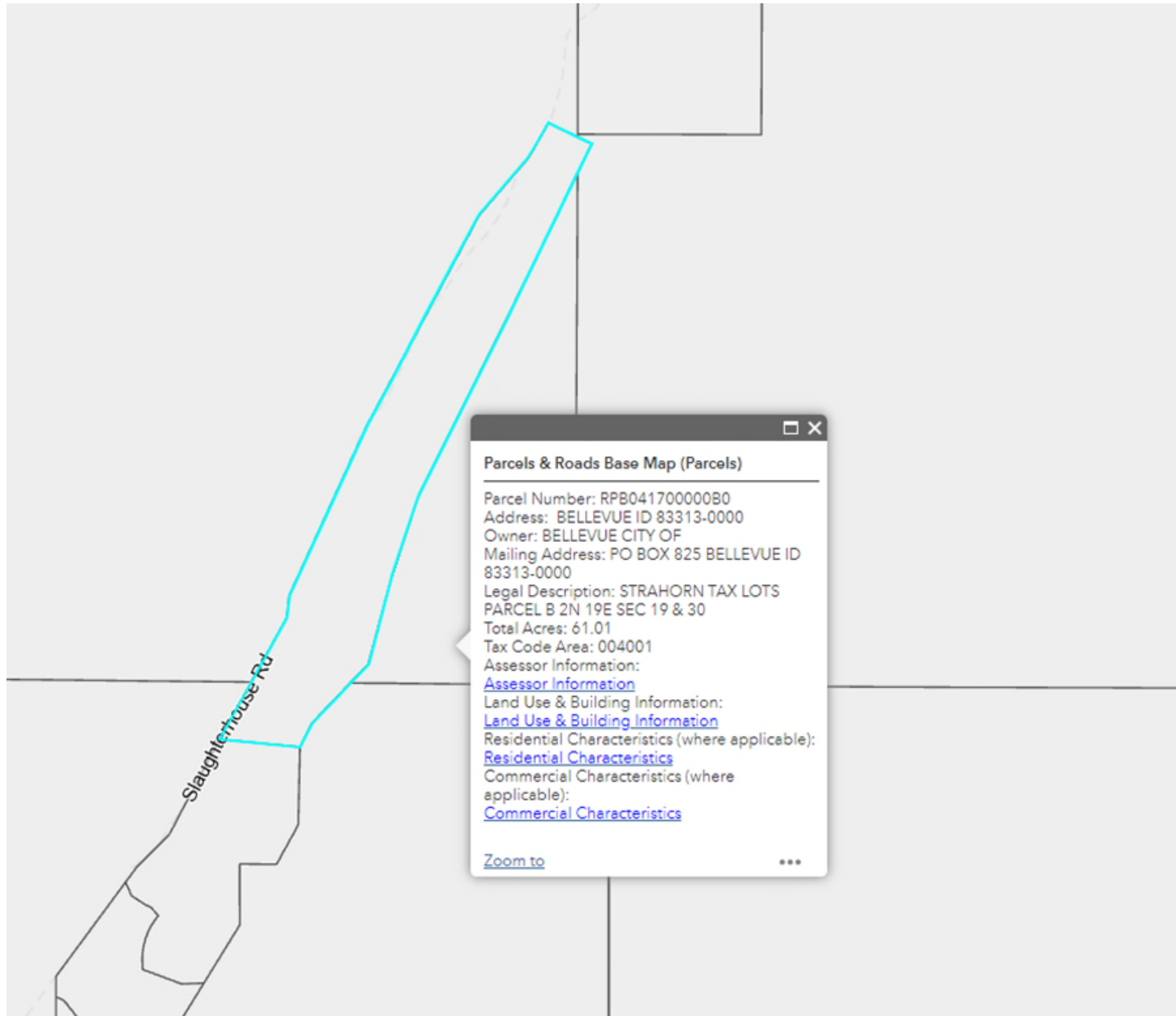
Action Item: Chris Johnson, Mayor

Note:

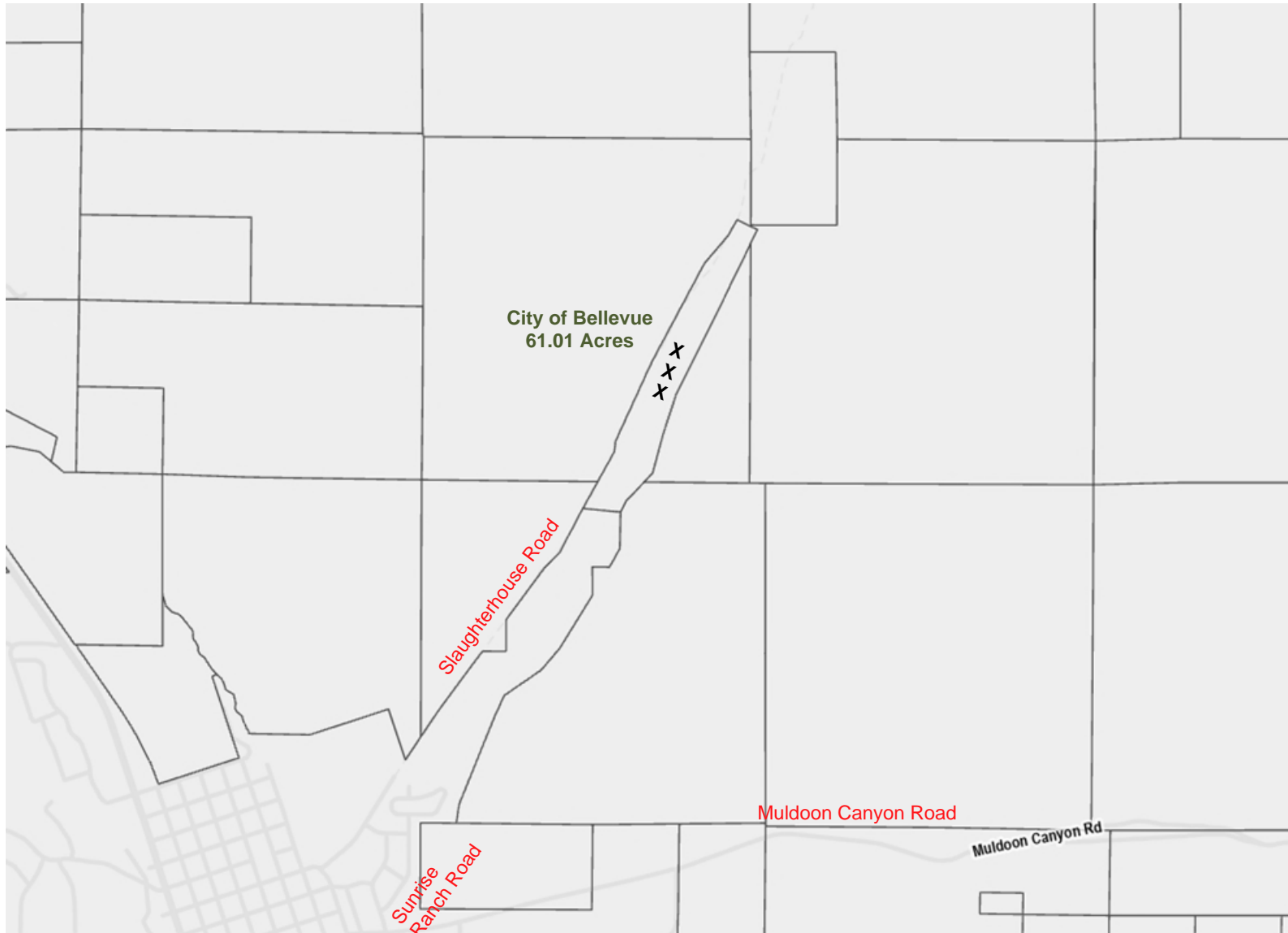
Suggested Motion: A possible motion for the city to proceed with advertising /requesting Invitation to Bids for Professional Appraisal Services and/or Setting Parameters on Financial Costs for the 61.01 Acres of City Owned Property, specifically Blaine County Parcel Number RPB041700000B0

Attachment(s): Blaine County Parcel Number RPB041700000B0 – Plat Documents

Blaine County, Idaho
Parcel Number: RPB04700000B0
61.01 Acres



Blaine County, Idaho
Surrounding Parcel





City of Bellevue

City of Bellevue
Regular Common Council Meeting
July 22, 2024

Agenda Item 7b: NEW BUSINESS:

Consideration of Resolution No. 2384, A Resolution of the City of Bellevue, Idaho, Relating to Surplus Personal Property; Declaring Certain Personal Property of The City to be Surplus; Authorizing and Directing the Disposal of the Surplus Property; and Providing an Effective Date

Action Item: Kirt Gaston, Marshal

Note: Marshal Gaston is requesting authorization to surplus one (1) of the Marshal's Office Ford Explorer Police Interceptor (2018). Marshal Gaston indicated that the vehicle in question has been to two (2) vehicle service providers and it is more cost effective to surplus the vehicle than to continue investing city resources.

Suggested Motion: Move to Approve Resolution No. 2384, A Resolution of the City of Bellevue, Idaho, Relating to Surplus Personal Property; Declaring Certain Personal Property of The City to be Surplus; Authorizing and Directing the Disposal of the Surplus Property; and Providing an Effective Date

Attachment(s): Resolution No. 2384

RESOLUTION NO. 2384

A RESOLUTION OF THE CITY OF BELLEVUE, IDAHO, RELATING TO SURPLUS PERSONAL PROPERTY; DECLARING CERTAIN PERSONAL PROPERTY OF THE CITY TO BE SURPLUS; AUTHORIZING AND DIRECTING THE DISPOSAL OF THE SURPLUS PROPERTY; AND PROVIDING AN EFFECTIVE DATE

WHEREAS, the City of Bellevue, Idaho ("City") has acquired certain personal property for the purpose of carrying out services in the public interest; and,

WHEREAS, a certain item of personal property of the City, as described herein, has become worn out, obsolete, or is no longer needed by the City; and

WHEREAS, the Common Council of the City has deemed it unnecessary to maintain ownership of surplus personal property of the City as described herein; and

WHEREAS, the Common Council of the City desires to dispose of the property as allowed by State law.

NOW THEREFORE BE IT RESOLVED BY THE COMMON COUNCIL OF THE CITY OF BELLEVUE, IDAHO, AS FOLLOWS:

SECTION 1: The Common Council finds and declares that the City no longer has a use for the following personal property ("surplus property"):

- 2018 Ford Explorer Police Interceptor, VIN# 1FM5K8AR8JGB93398, Mileage 61,280.

SECTION 2: The Common Council establishes the total value of the surplus property as nominal and less than what it would cost to dispose of or repair the property.

SECTION 3: The Mayor or his designee is authorized and directed to dispose of the property by auction or by other necessary means to dispose of the property.

SECTION 4: This Resolution shall take effect and be in force immediately upon its passage and approval.

PASSED AND APPROVED by the Bellevue Common Council and signed by the Mayor of the City of Bellevue, Idaho, this 22nd day of July 2024.

Chris Johnson, Mayor

ATTEST:

Michelle K. Vest Snarr, City Clerk

ROLL CALL

AYE

NAY

Council Member Carreiro

Council Member Giordani

Council Member Leahy

Council Member Mahoney

Council Member Obenauf

Council Member Shay



City of Bellevue

City of Bellevue
Regular Common Council Meeting
July 22, 2024

Agenda Item 8: BUDGET WORKSHOP

Fiscal Year 2025 – Budget Workshop

Action Item: Shelly Shoemaker, City Treasurer

Note: This is the fourth of four proposed budget workshops. It is my understanding that Ms. Shoemaker is still anticipating the Council to conduct the city's Fiscal Year 2025 public hearing on August 12, 2024. The public hearing date is already on the city's website; I just need to upload the documents after the tentative budget is ready to be presented at the public hearing.

Suggested Motion: n/a

Attachment(s): Ms. Shoemaker will provide the Council with updated budget documents before or at the meeting on Monday, July 22, 2024.